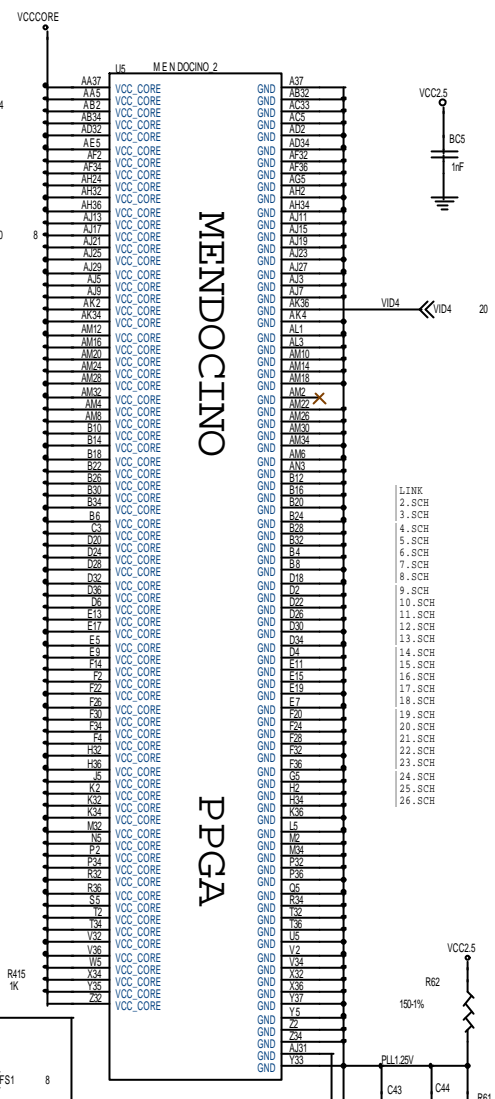
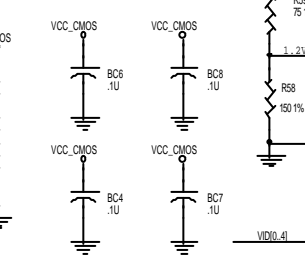
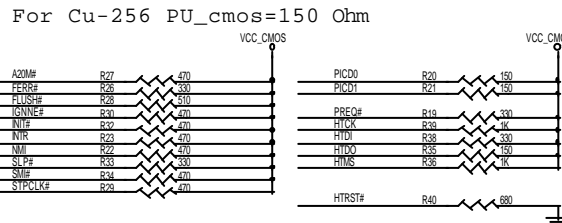
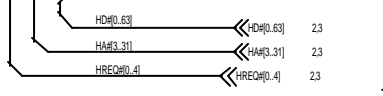
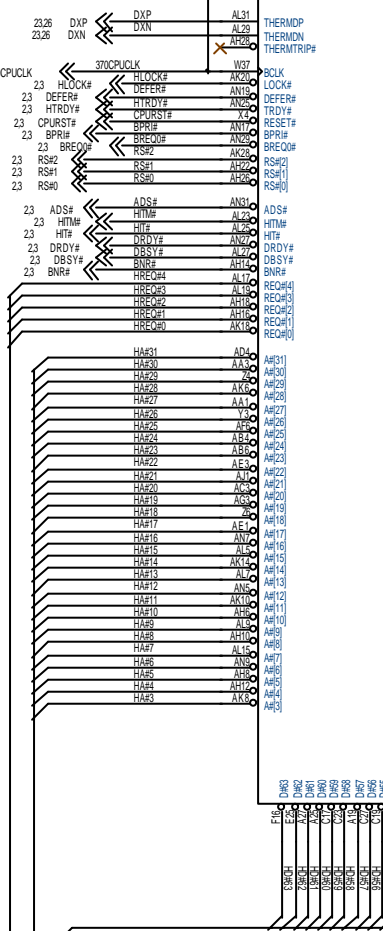


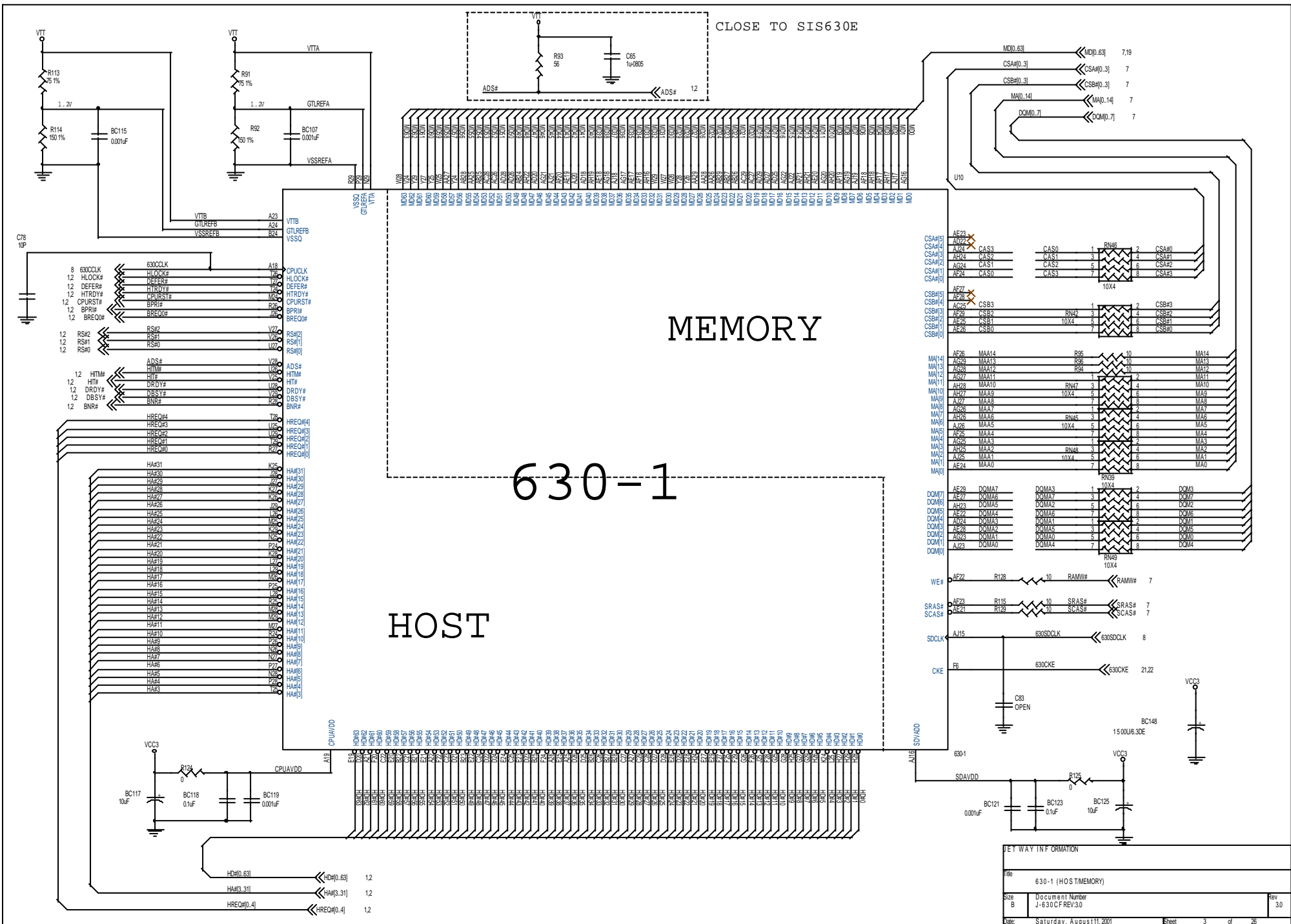
PPGA 370

| VLD3 | VLD2 | VLD1 | VLD0 | VCC CORE |
|------|------|------|------|----------|
| 1 | 1 | 1 | 1 | 1.30 |
| 1 | 1 | 1 | 1 | 1.35 |
| 1 | 1 | 1 | 1 | 1.40 |
| 1 | 1 | 1 | 1 | 1.45 |
| 1 | 1 | 1 | 1 | 1.50 |
| 1 | 1 | 1 | 1 | 1.55 |
| 1 | 1 | 1 | 1 | 1.60 |
| 1 | 1 | 1 | 1 | 1.65 |
| 1 | 1 | 1 | 1 | 1.70 |
| 1 | 1 | 1 | 1 | 1.75 |
| 1 | 1 | 1 | 1 | 1.80 |
| 1 | 1 | 1 | 1 | 1.85 |
| 1 | 1 | 1 | 1 | 1.90 |
| 1 | 1 | 1 | 1 | 1.95 |
| 1 | 1 | 1 | 1 | 2.00 |
| 1 | 1 | 1 | 1 | 2.05 |



LET WAY INFORMATION

| | |
|-------|---------------------------------|
| File | MENDOCINO PPGA CPU |
| Size | B |
| Doc | Document Number J-630CF REV.3.0 |
| Date | Saturday, August 11, 2001 |
| Sheet | 1 of 26 |



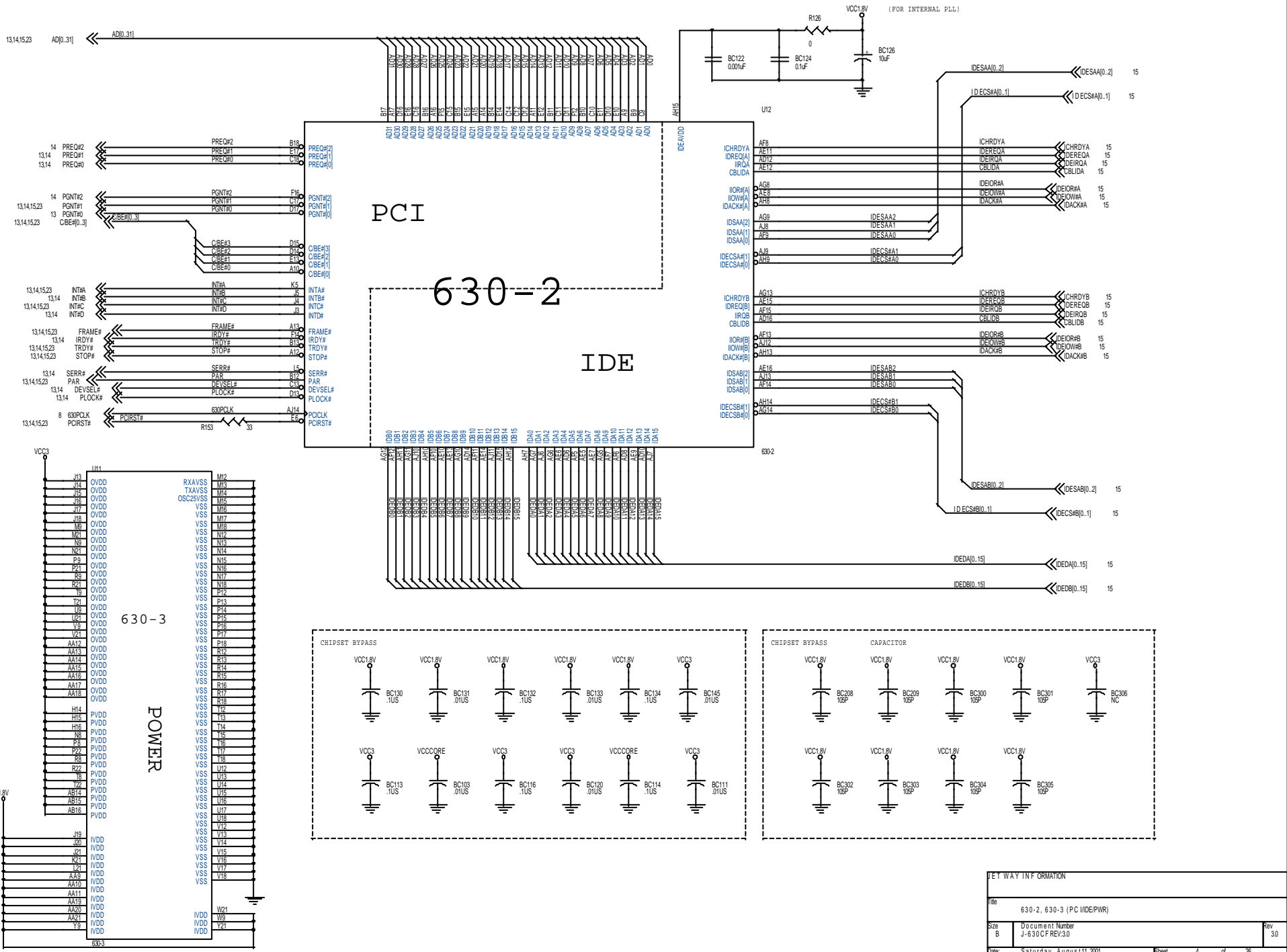
CLOSE TO SIS630E

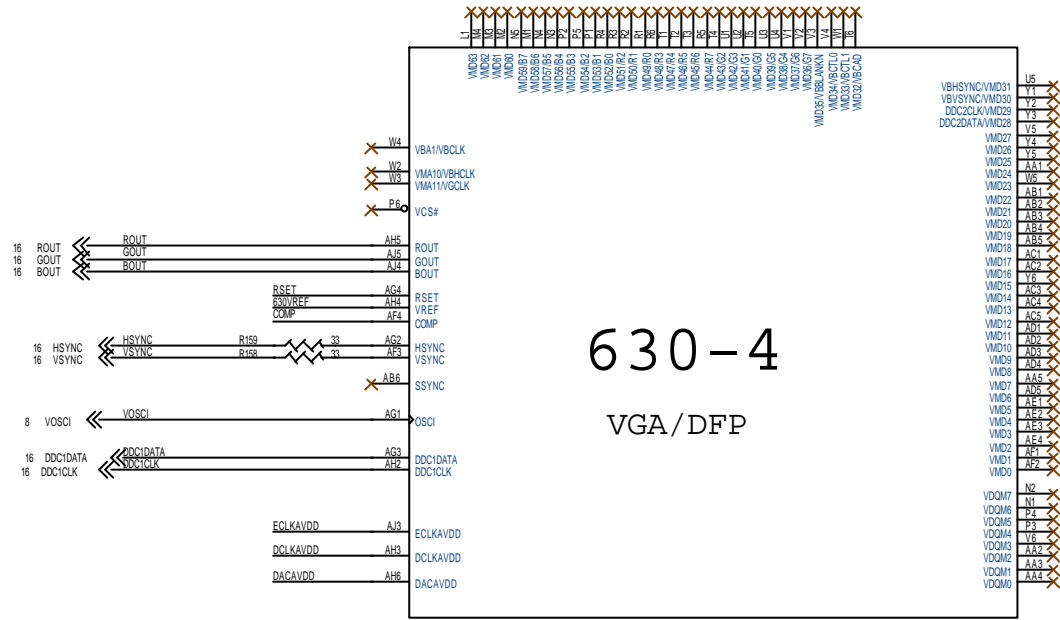
MEMORY

630-1

HOST

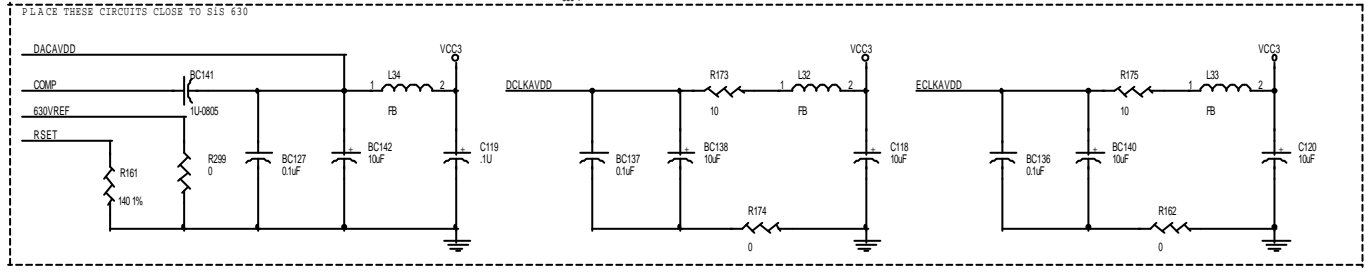
| LET WAY INFORMATION | | |
|---------------------|---------------------------|---------------|
| File | 630-1 (HOST MEMORY) | |
| Size | Document Number | Rev |
| B | J-6301CF REV.30 | 3.0 |
| Date | Saturday, August 11, 2001 | Sheet 3 of 26 |



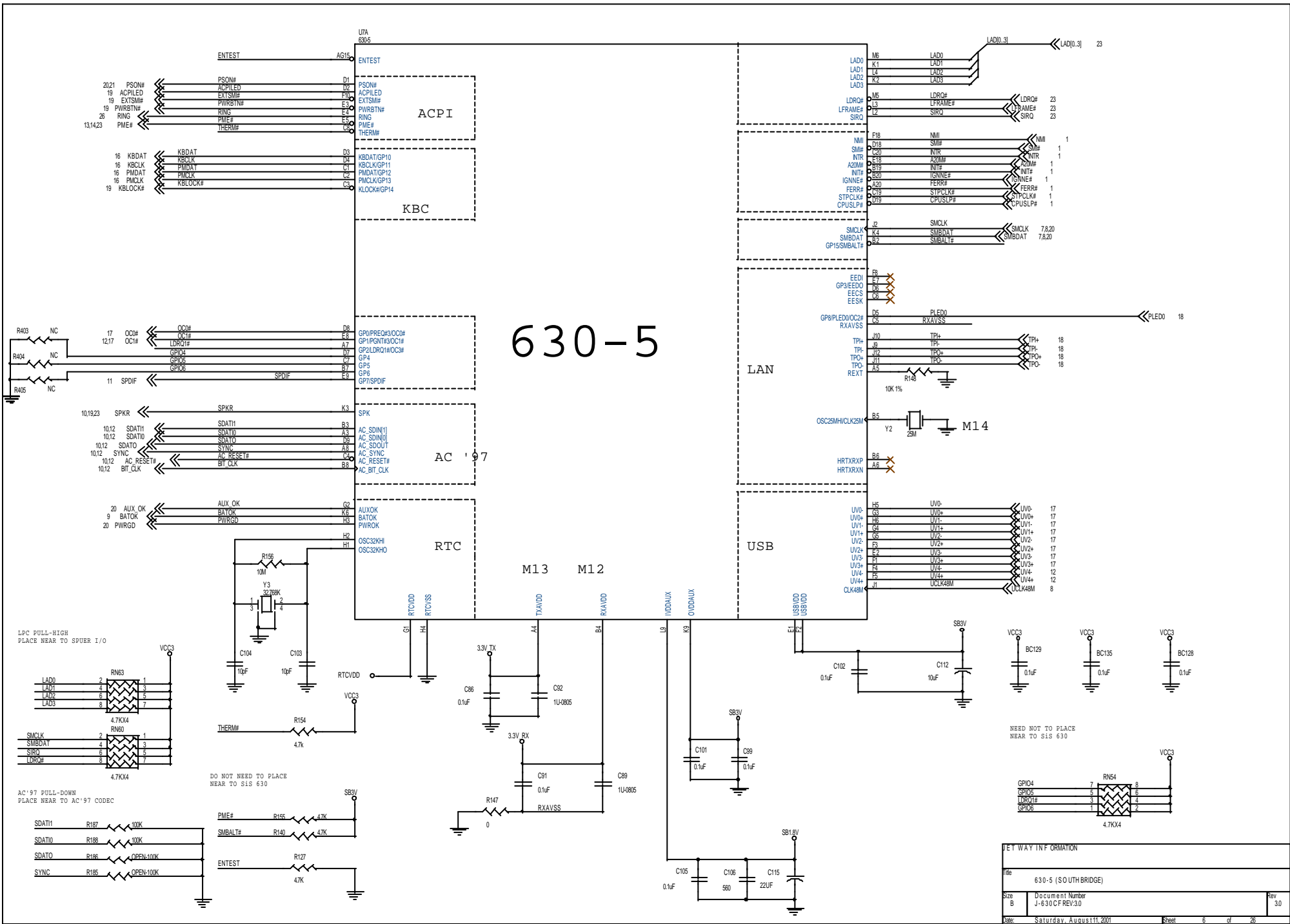


630-4

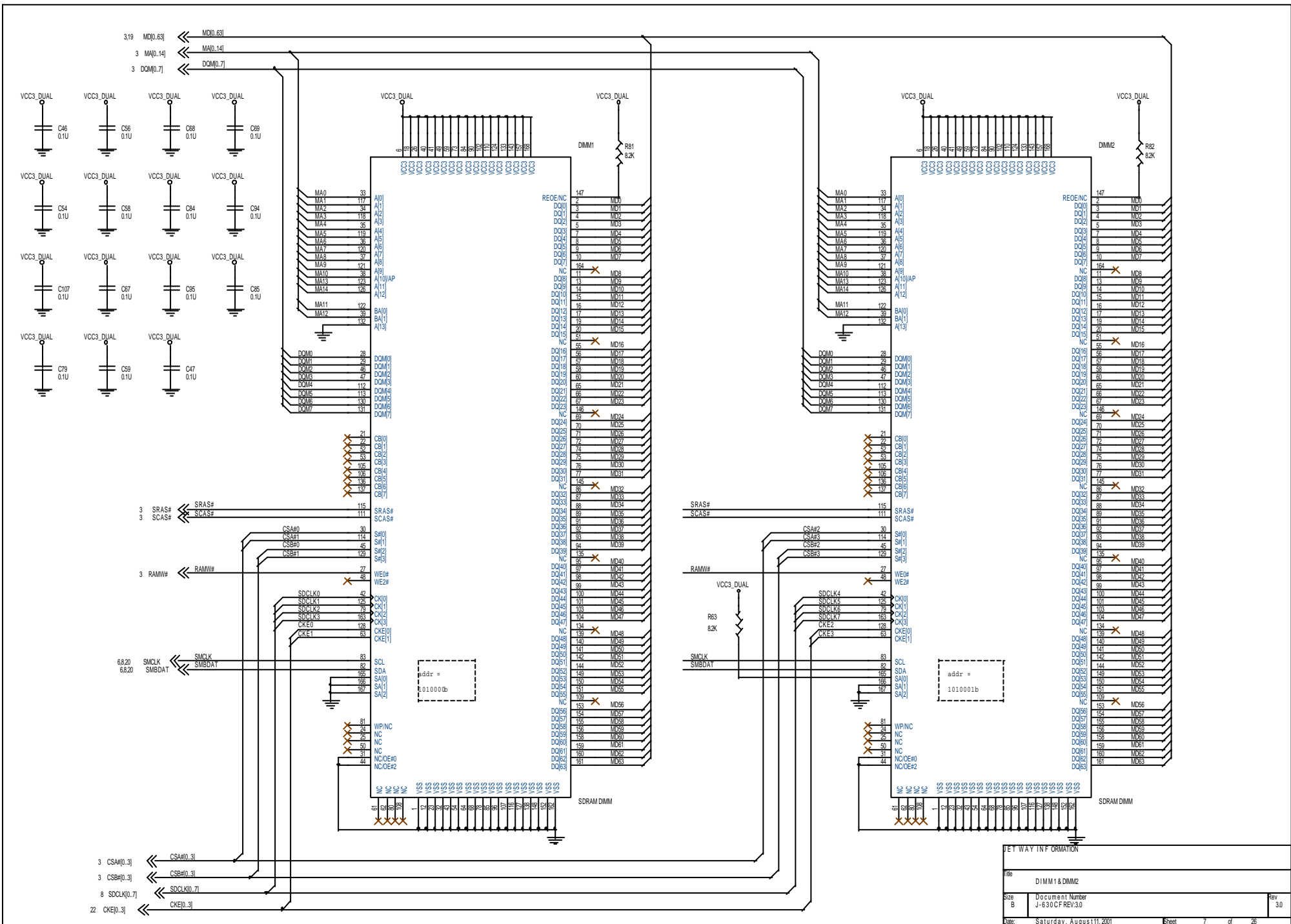
VGA/DFP

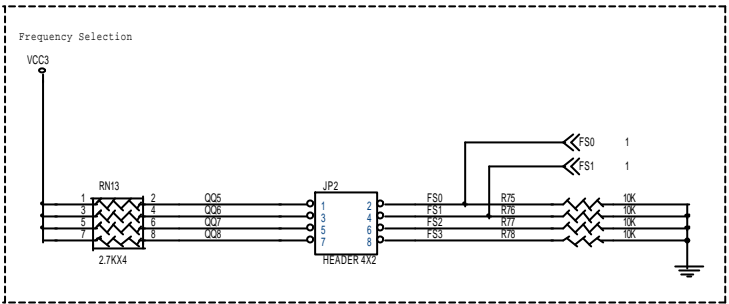


| JET WAY INFORMATION | |
|---------------------|---------------------------|
| File | 630-4 (VGA/DFP) |
| Size | Document Number |
| B | J-630CF REV.30 |
| Rev | 3.0 |
| Date | Saturday, August 11, 2001 |
| Sheet | 5 of 26 |

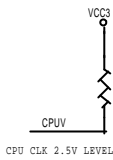


| JET WAY INFORMATION | | | |
|---------------------|---------------------------|--------|---------|
| File: | 630-5 (SOUTH BRIDGE) | | |
| Size: | Document Number | Rev | |
| B | J-6301CF REV.30 | 3.0 | |
| Date: | Saturday, August 11, 2001 | Sheet: | 6 of 26 |

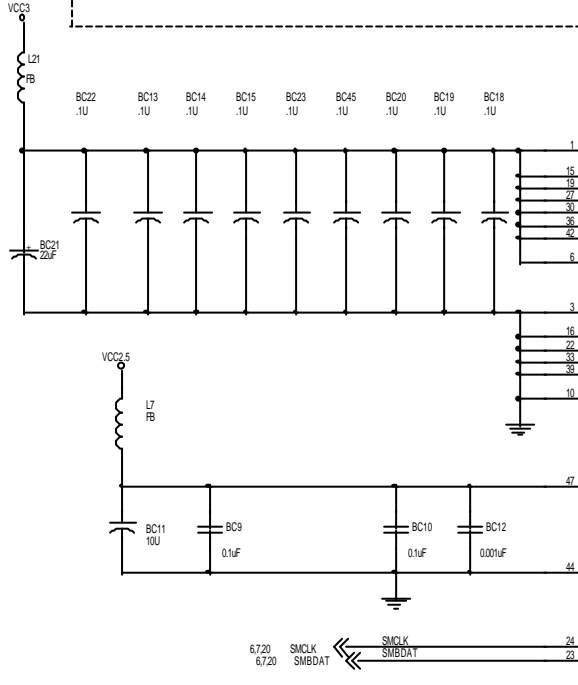




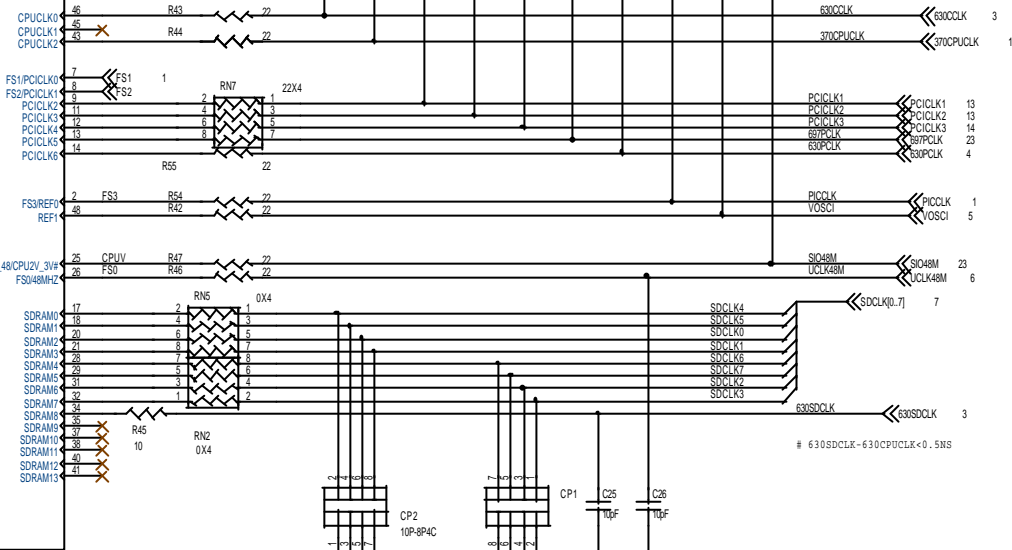
@ CLOCK_SPACE -> .14 mil



CPU CLK 2.5V LEVEL



U3 CLOCK GENERATOR

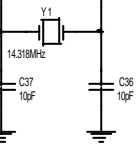


- (5 OPTIONS)
1. ICS9248-102 (ICS)
 2. ICS207 (IC Works)
 3. PLS2072-31 (Phase Link)
 4. W83194B-630 (Winbond)
 5. RTM540-630 (Realtek)

Frequency Selection Table

| (FS3) | (FS2) | (FS1) | (FS0) | CPU (MHz) | SDRAM (MHz) | PCI (MHz) | REF (MHz) |
|-------|-------|-------|-------|--------------|----------------|--------------|--------------|
| 0 | 0 | 0 | 0 | 66.7 | 100 | 33.33 | 14.318 |
| 0 | 0 | 0 | 1 | 100 | 100 | 33.33 | 14.318 |
| 0 | 0 | 1 | 0 | 150 | 100 | 33.33 | 14.318 |
| 0 | 0 | 1 | 1 | 133 | 100 | 33.33 | 14.318 |
| 0 | 1 | 0 | 0 | 66 | 133 | 33.33 | 14.318 |
| 0 | 1 | 0 | 1 | 100 | 133 | 33.33 | 14.318 |
| 0 | 1 | 1 | 0 | 100 | 150 | 33.33 | 14.318 |
| 0 | 1 | 1 | 1 | 133 | 133 | 33.33 | 14.318 |
| 1 | 0 | 0 | 0 | 66.7 | 66.7 | 33.33 | 14.318 |
| 1 | 0 | 0 | 1 | 83.3 | 83.3 | 33.33 | 14.318 |
| 1 | 0 | 1 | 0 | 90 | 90 | 33.33 | 14.318 |
| 1 | 0 | 1 | 1 | 95 | 95 | 33.33 | 14.318 |
| 1 | 1 | 0 | 0 | 95 | 106 | 33.33 | 14.318 |
| 1 | 1 | 0 | 1 | 112 | 112 | 33.33 | 14.318 |
| 1 | 1 | 1 | 0 | 166 | 111 | 33.33 | 14.318 |
| 1 | 1 | 1 | 1 | 166 | 166 | 33.33 | 14.318 |

NOTE:
PCICLK<37.5MHz



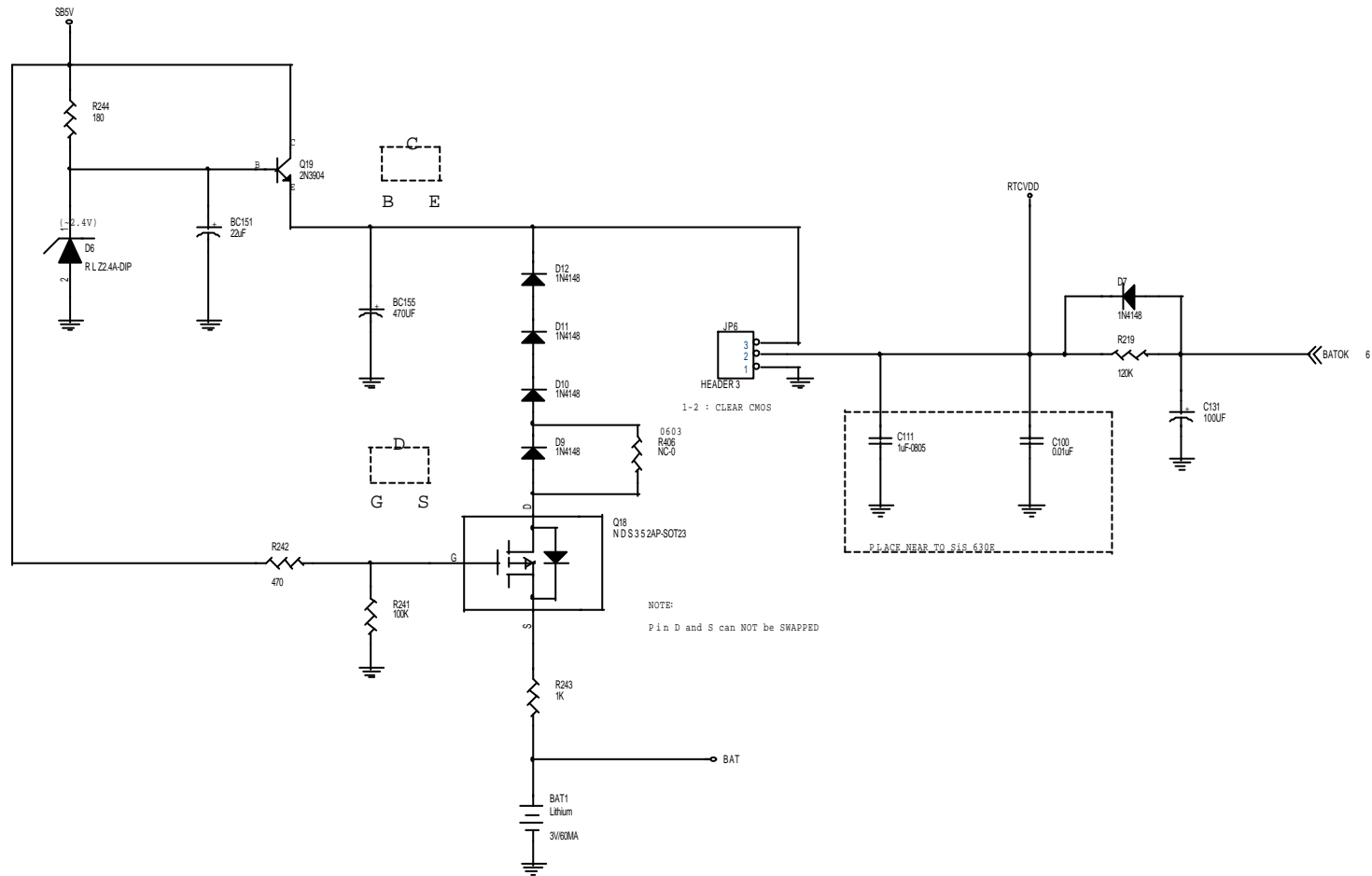
JP2

| CPU/SDRAM | 1-2 | 3-4 | 5-6 | 7-8 | JP10 | JP11 |
|-----------|-----|-----|-----|-----|------|------|
| AUTO | OFF | OFF | OFF | OFF | ON | ON |
| 66/66 | OFF | OFF | OFF | ON | OFF | OFF |
| 66/100 | OFF | OFF | OFF | OFF | OFF | OFF |
| 100/100 | ON | OFF | OFF | OFF | OFF | OFF |
| 100/133 | ON | OFF | ON | OFF | OFF | OFF |
| 133/100 | ON | ON | OFF | OFF | OFF | OFF |
| 133/133 | ON | ON | ON | OFF | OFF | OFF |

NET WAY INFORMATION

| | |
|-------|-----------------------------|
| File | CLOCK GENERATOR (5 OPTIONS) |
| Size | Document Number |
| B | J-630CF REV.30 |
| Date | Saturday, August 11, 2001 |
| Sheet | 8 of 26 |
| Rev | 3.0 |

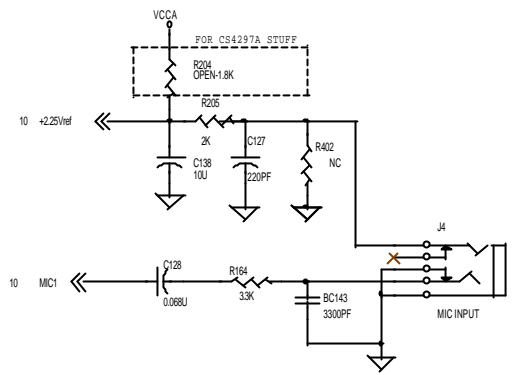
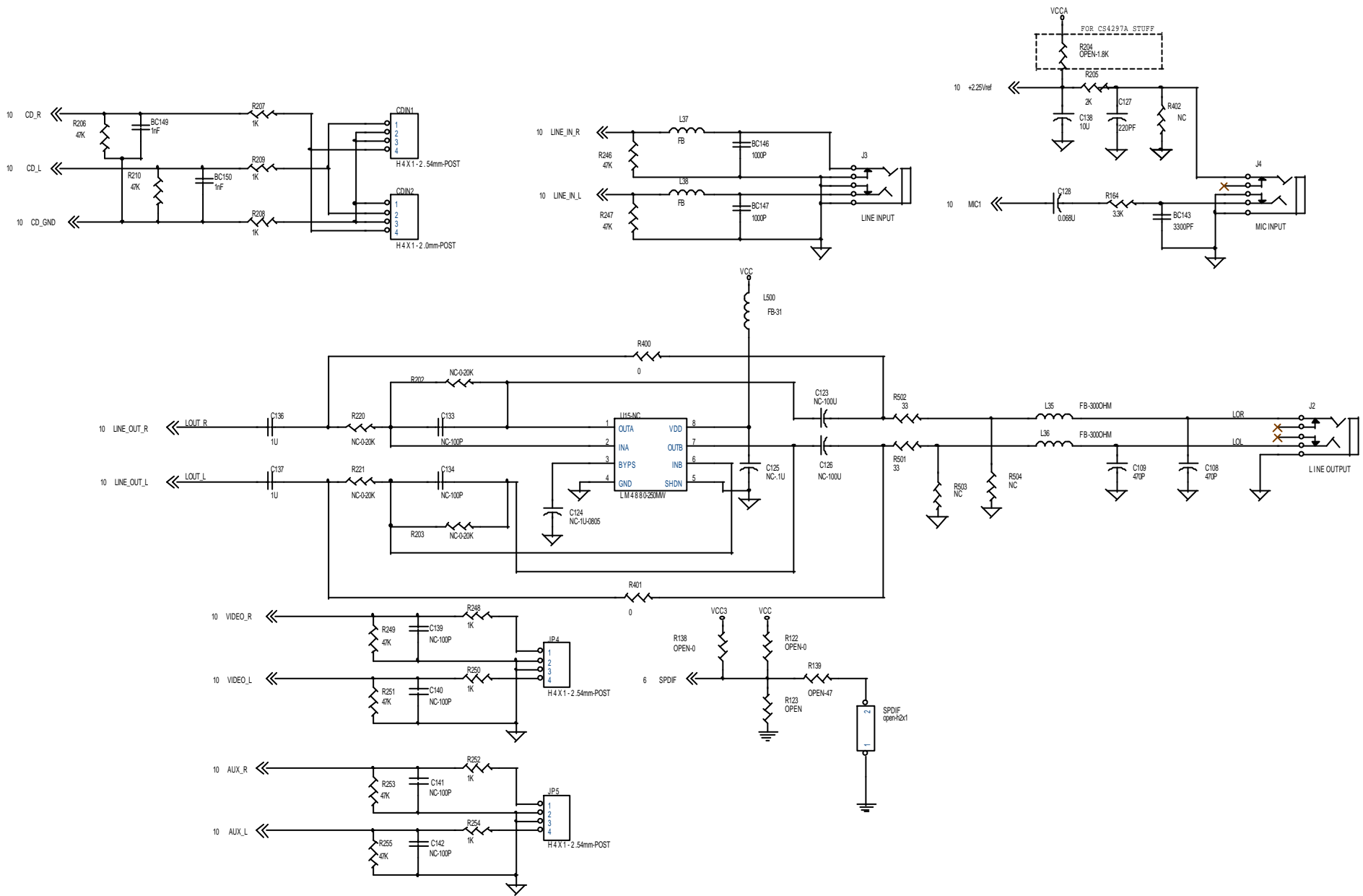
INT. RTC
MUST CLOSE TO CHIP RTCVDD PIN



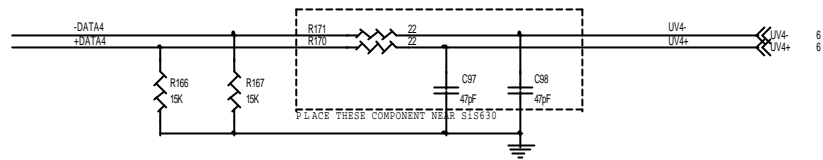
NOTE:
Pin D and S can NOT be SWAPPED

NOTE:
SIS IS NOT RESPONSIBLE FOR
ANY ERRORS OR OMISSIONS IN
THESE SCHEMATICS. THIS IS
AN EXAMPLE ONLY.

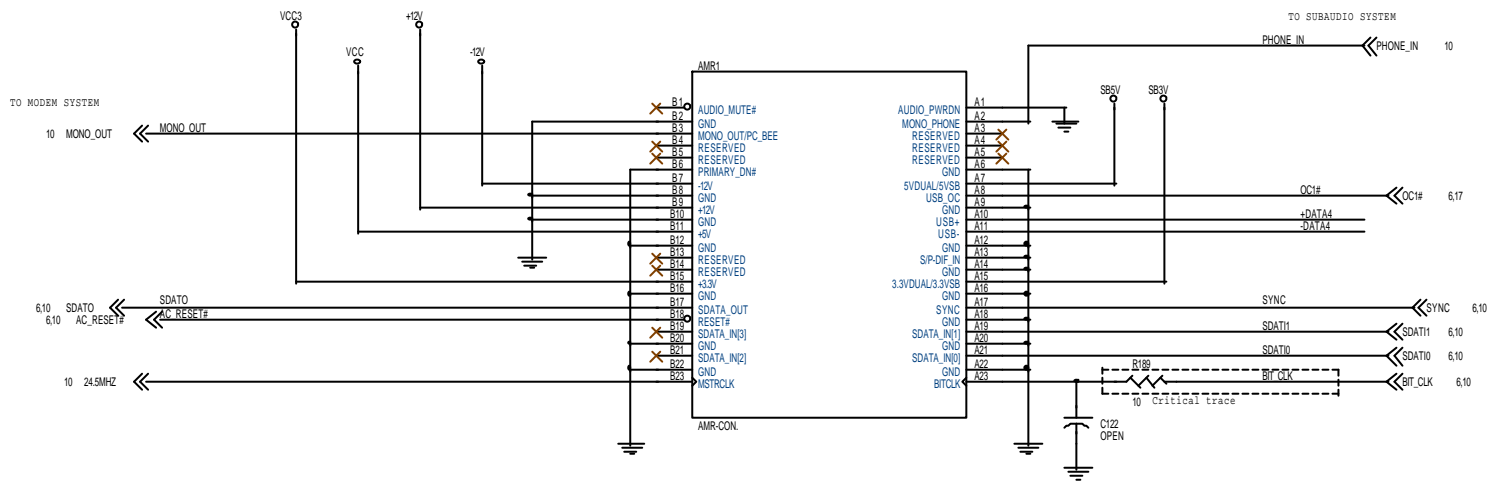
| JET WAY INFORMATION | | |
|---------------------|---------------------------|---------------|
| File | RTC | |
| Size | Document Number | Rev |
| B | J-630CFREV.30 | 3.0 |
| Date | Saturday, August 11, 2001 | Sheet 9 of 26 |



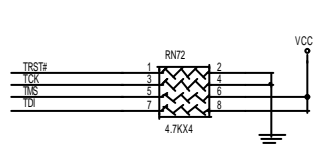
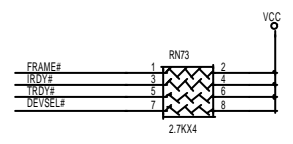
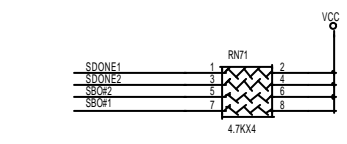
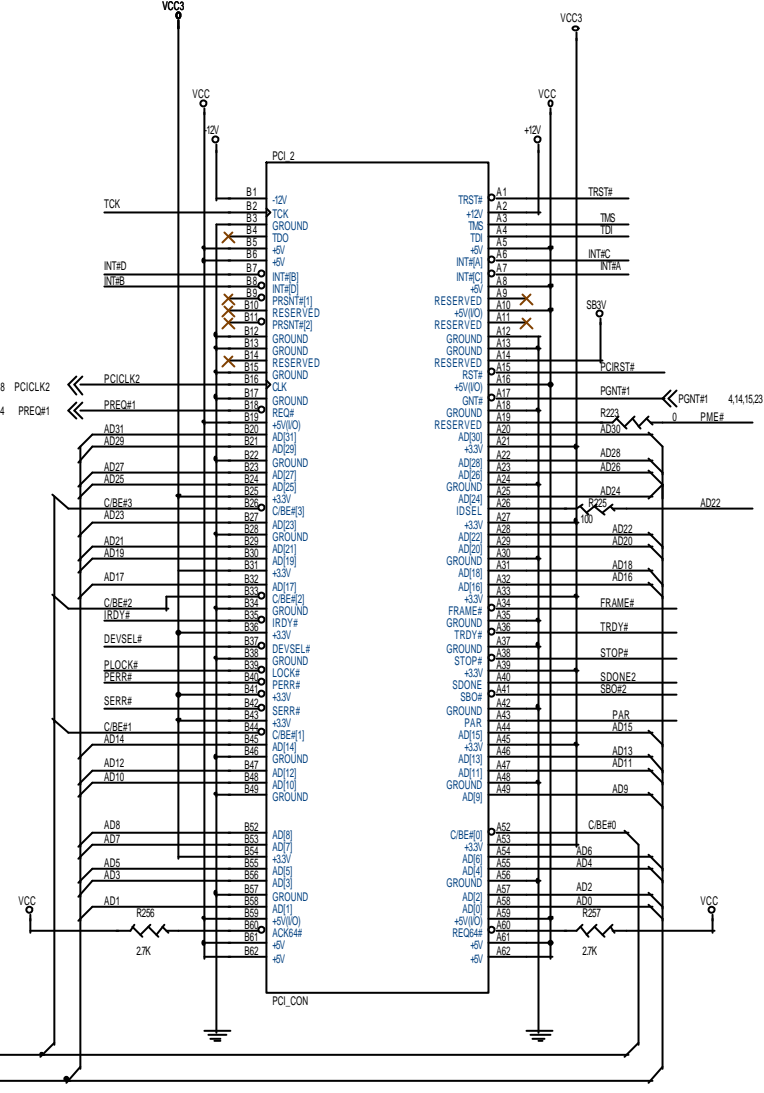
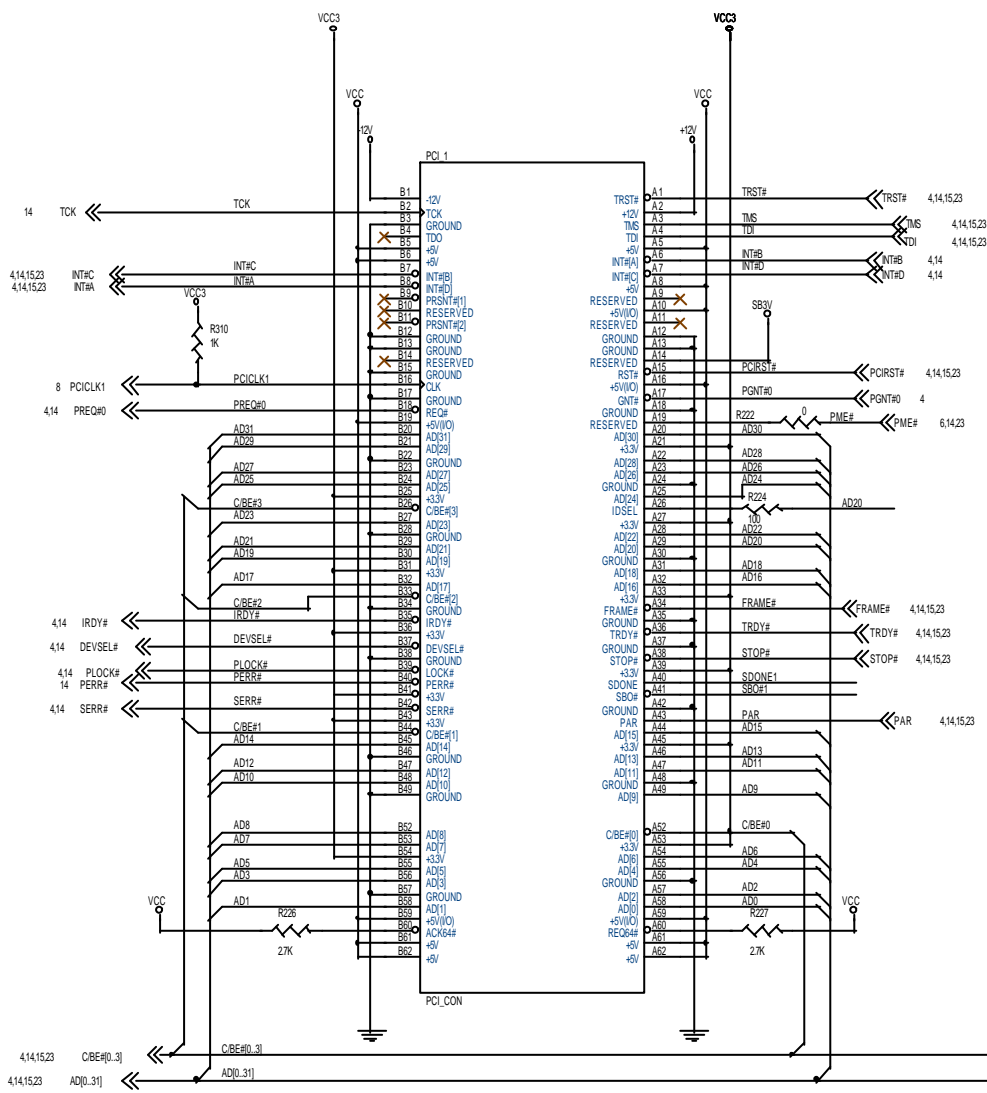
| JET WAY INFORMATION | | | |
|---------------------|--------------------|-----|--|
| File | AUDIO ANALOGUE I/O | | |
| Size | Document Number | Rev | |
| B | J-630CF REV.30 | 3.0 | |
| Date | | | |



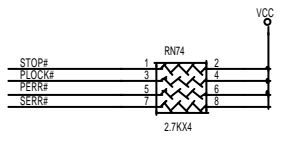
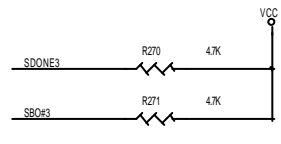
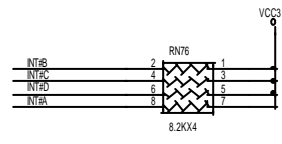
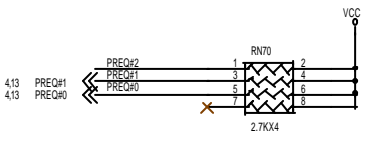
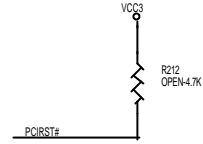
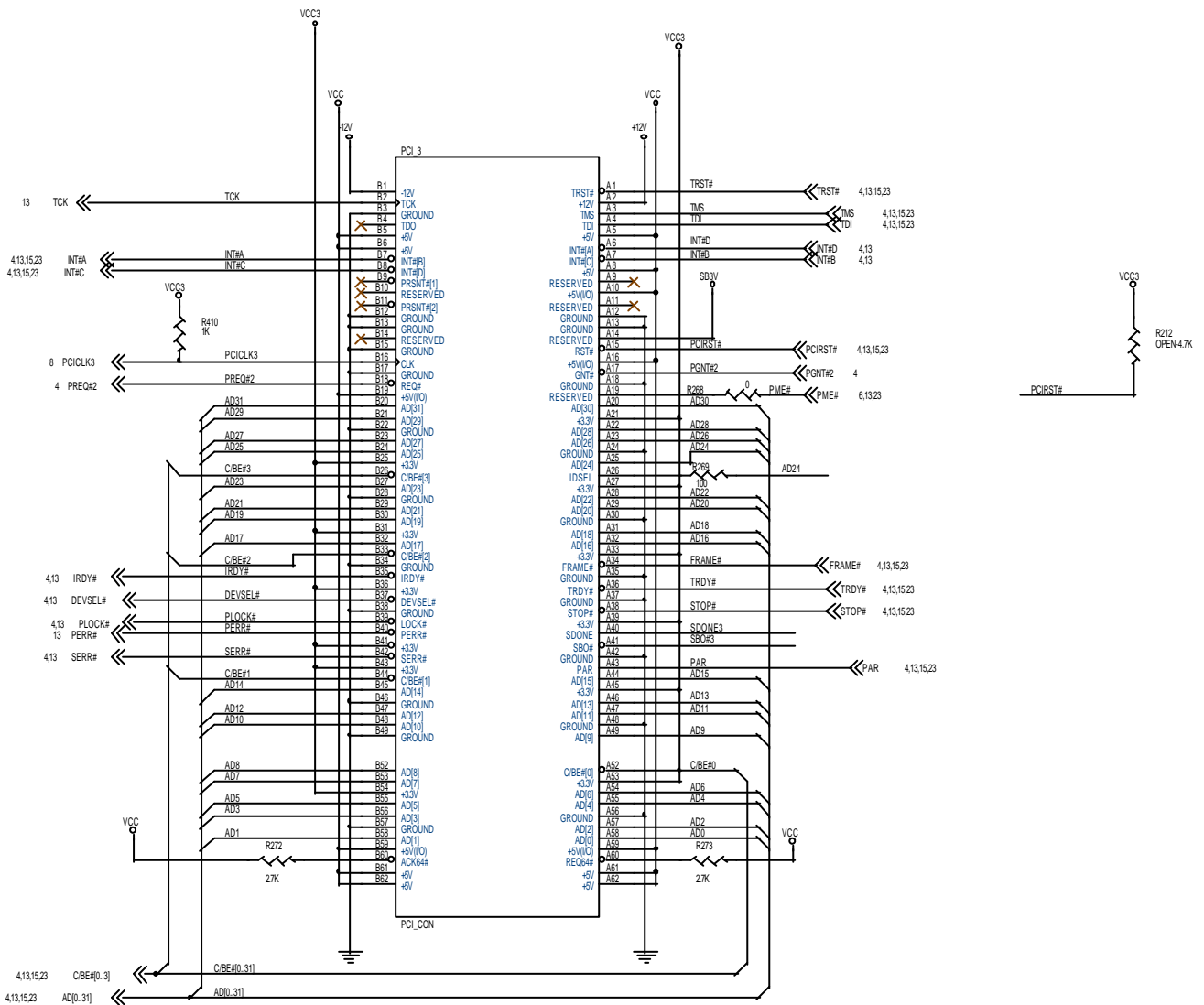
AMR



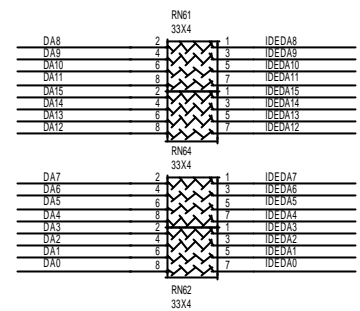
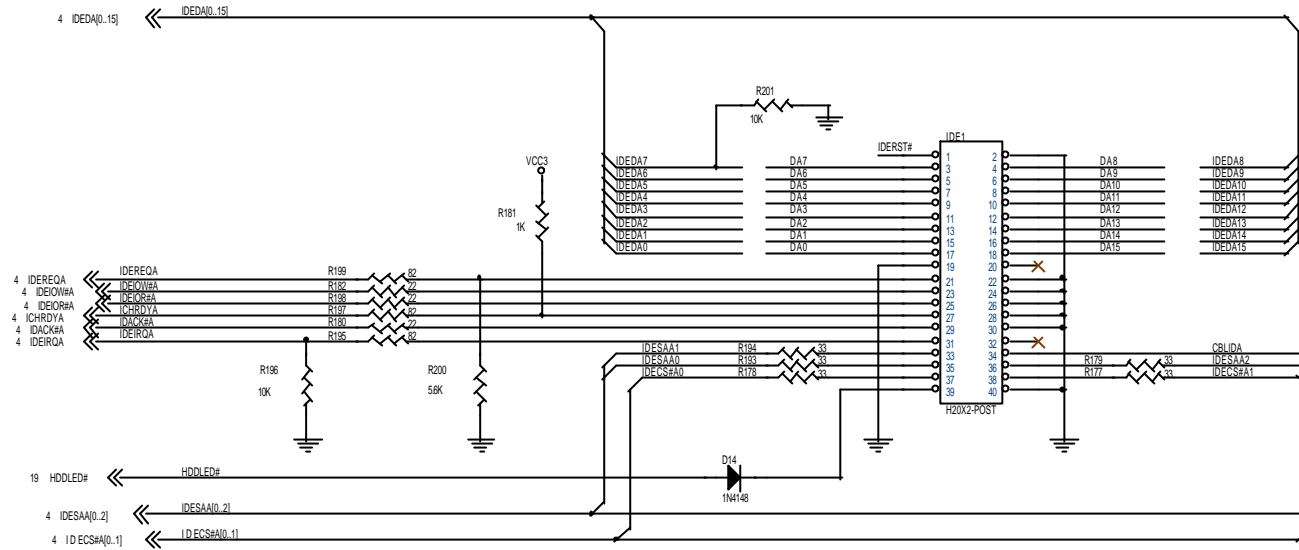
| JET WAY INFORMATION | |
|---------------------|---------------------------|
| File | AUDIO/MODEM RISER |
| Size | Document Number |
| B | J-630CF REV.30 |
| Rev | 3.0 |
| Date | Saturday, August 11, 2001 |
| Sheet | 12 of 26 |



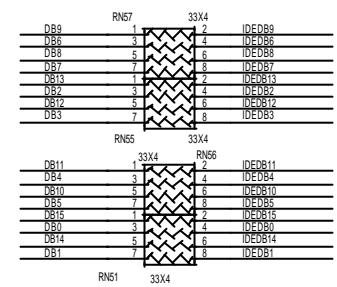
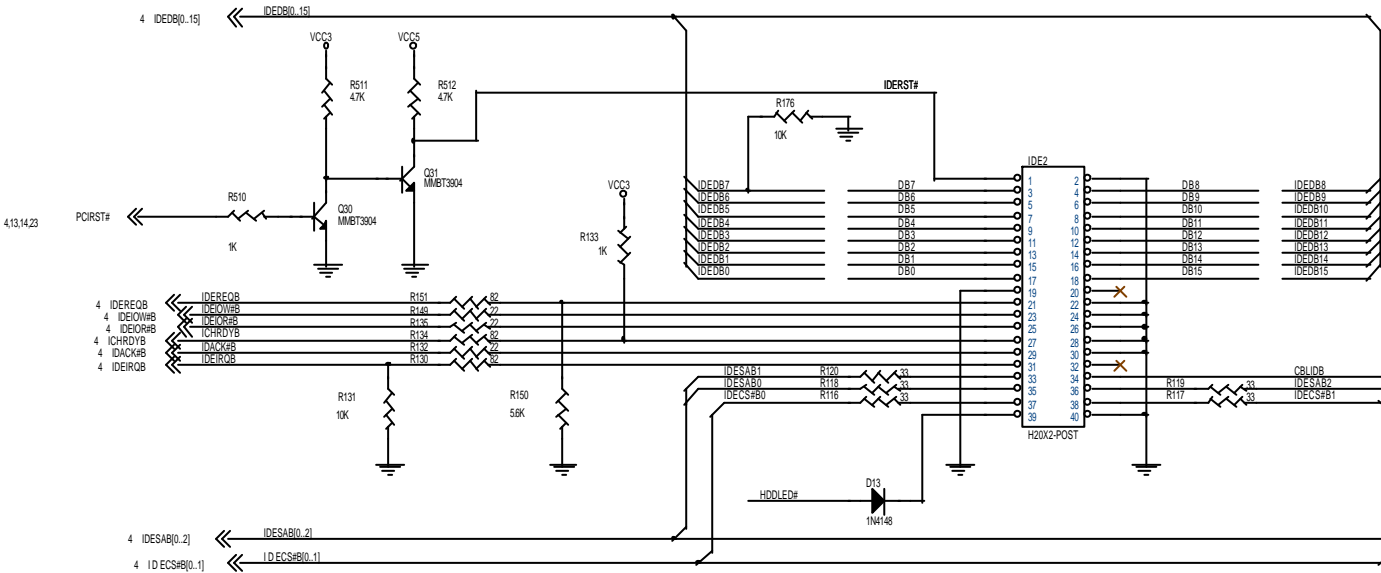
| JET WAY INFORMATION | |
|---------------------|---------------------------------|
| File: | PCI CONNECTOR 1&2 |
| Size: | Document Number J-6310CF REV.30 |
| Date: | Saturday, August 11, 2001 |
| Sheet: | 13 of 26 |
| Rev: | 3.0 |



| JET WAY INFORMATION | | | |
|---------------------------------|---------------------------------|----------|--|
| Title: PCI CONNECTOR 3&4 | | | |
| Size: B | Document Number: J-630CF REV.30 | Rev: 3.0 | |
| Date: Saturday, August 11, 2001 | Sheet: 14 | of 26 | |



RN65
33x4

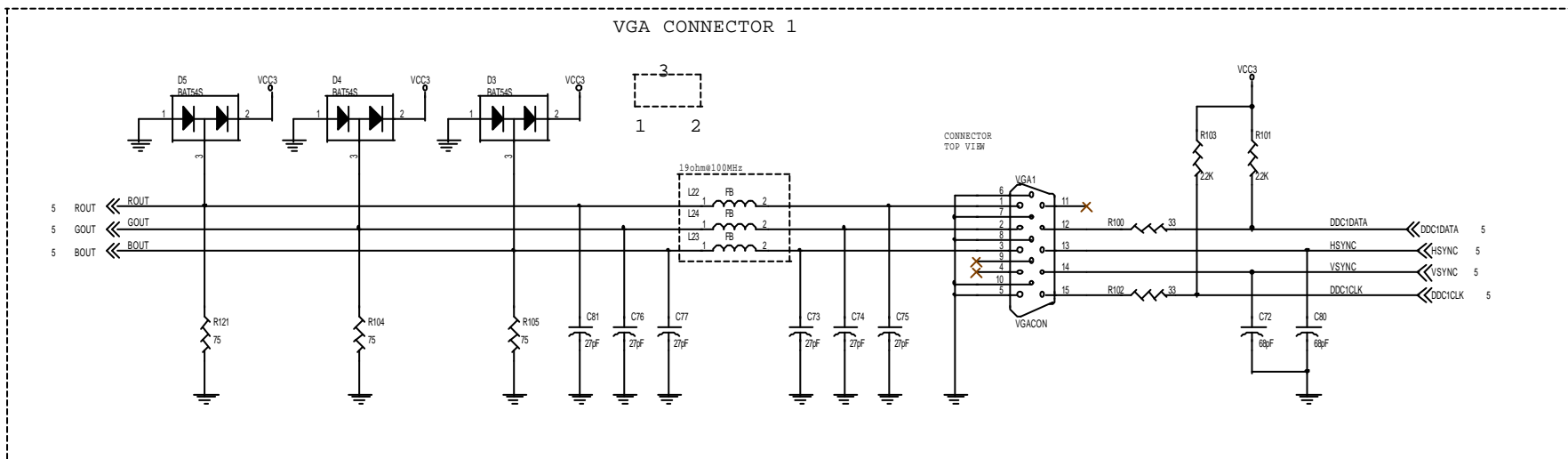
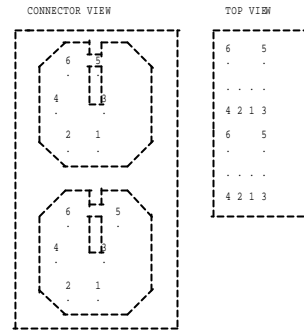
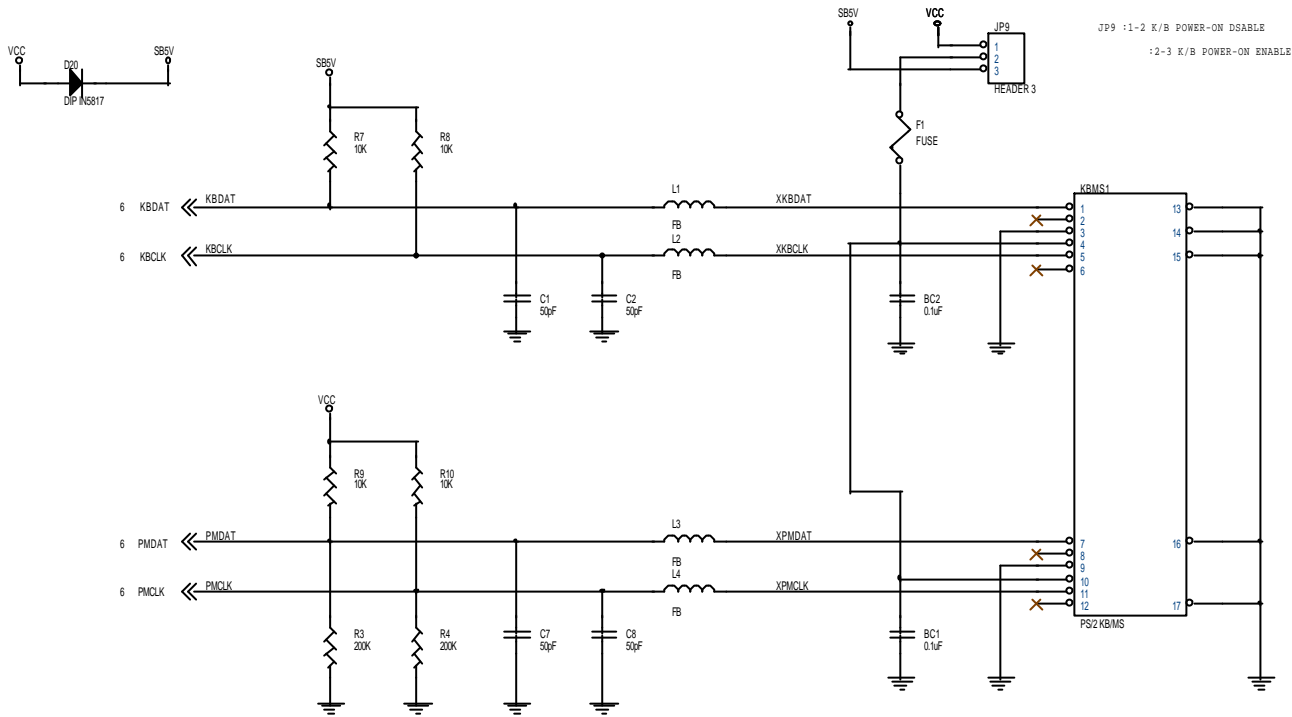


RN61
33x4

4.13.14.23

NOTE:
SIS IS NOT RESPONSIBLE FOR
ANY ERRORS OR OMISSIONS IN
THESE SCHEMATICS. THIS IS
AN EXAMPLE ONLY.

| JET WAY INFORMATION | |
|---------------------|-----------------------------------|
| File | IDE CONNECTORS |
| Size | Document Number J-630CF REV.30 |
| Date | Saturday, August 11, 2001 |
| Sheet | 15 of 26 |
| Rev | 3.0 |



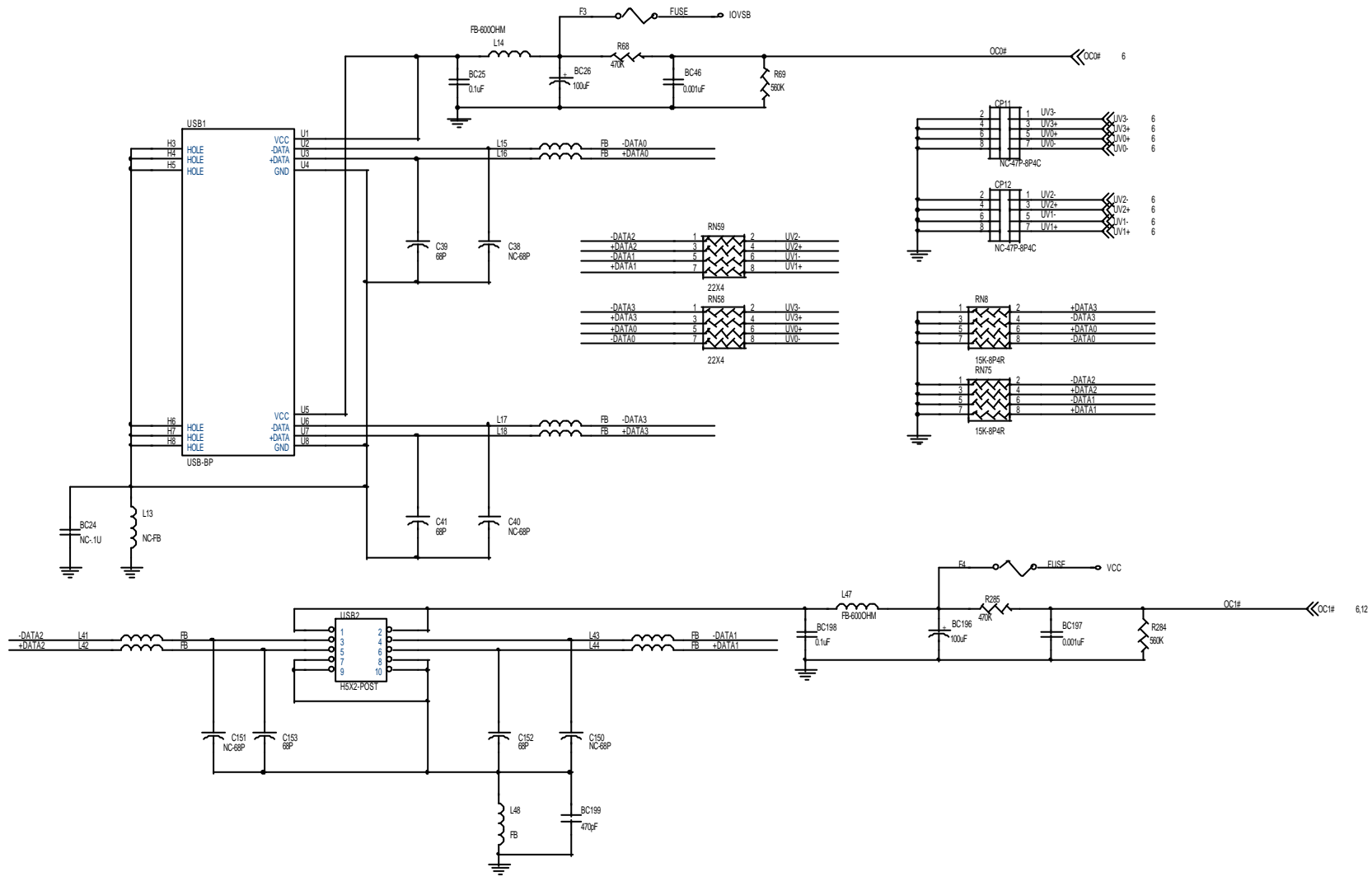
NOTE:
SIS IS NOT RESPONSIBLE FOR
ANY ERRORS OR OMISSIONS IN
THESE SCHEMATICS. THIS IS
AN EXAMPLE ONLY.

KEYWAY INFORMATION

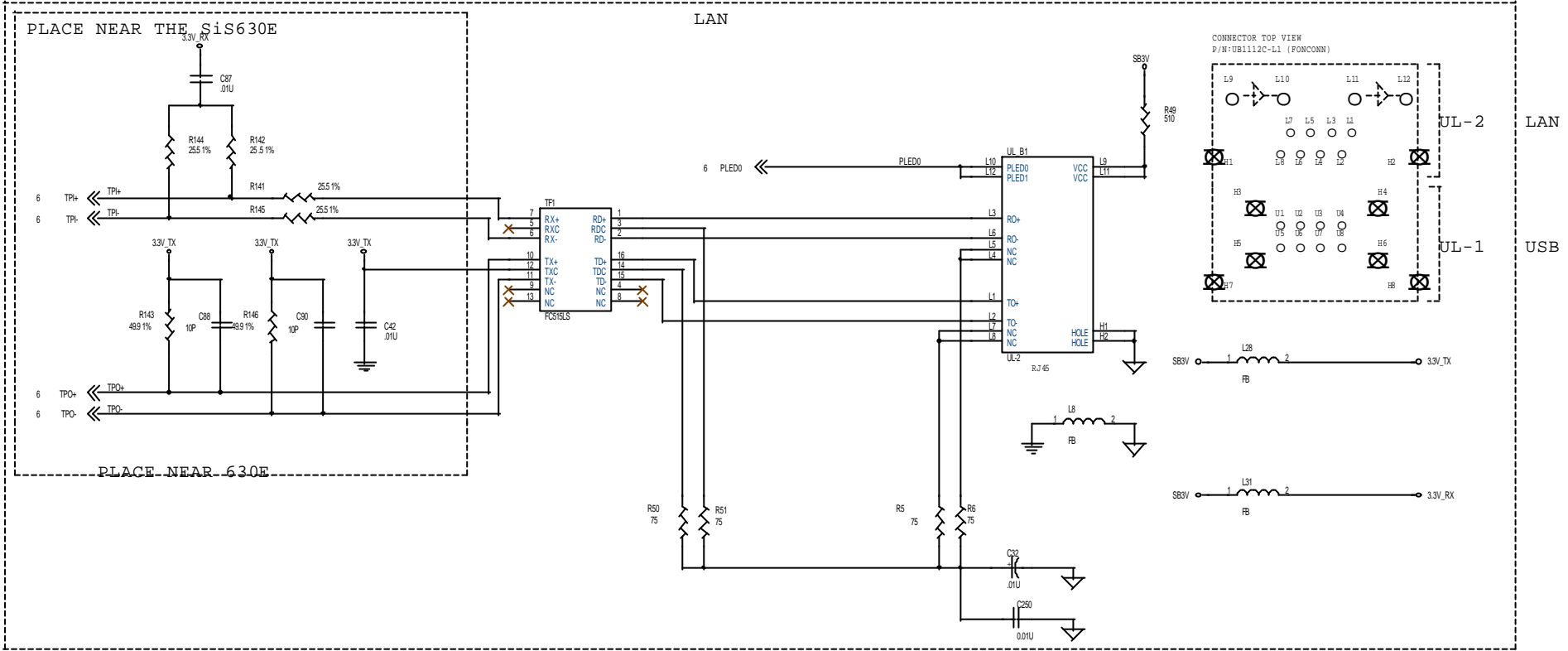
File: KEYBOARD & MOUSE CONNECTORS

Size: B Document Number: J-6301CF REV.3.0

Rev: 3.0

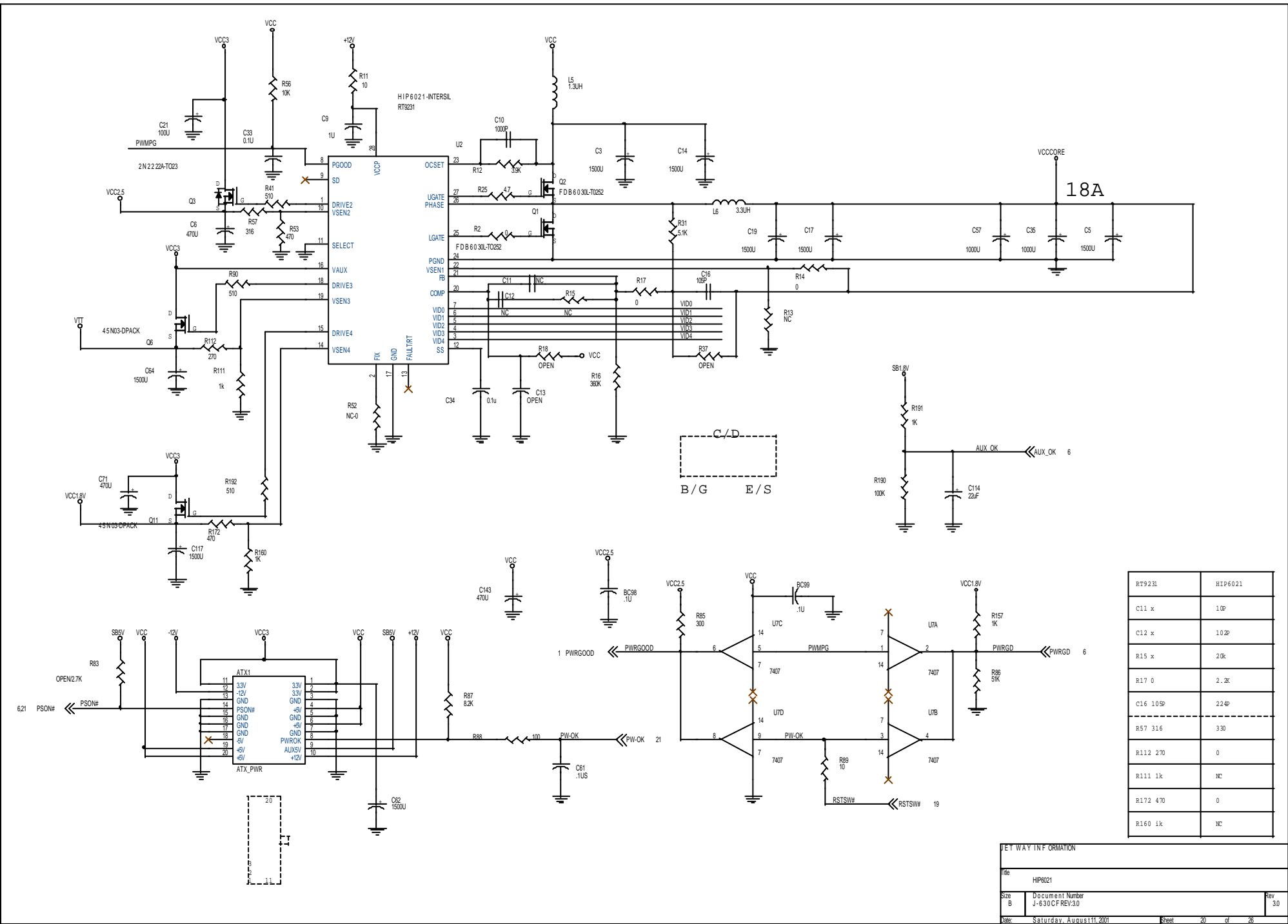


| JET WAY INFORMATION | |
|---------------------|---------------------------|
| File | USB CO NNECTORS |
| Size | Document Number |
| B | J-630CF REV.30 |
| Rev | 3.0 |
| Date | Saturday, August 11, 2001 |
| Sheet | 17 of 26 |



NOTE:
SIS IS NOT RESPONSIBLE FOR
ANY ERRORS OR OMISSIONS IN
THESE SCHEMATICS. THIS IS
AN EXAMPLE ONLY.

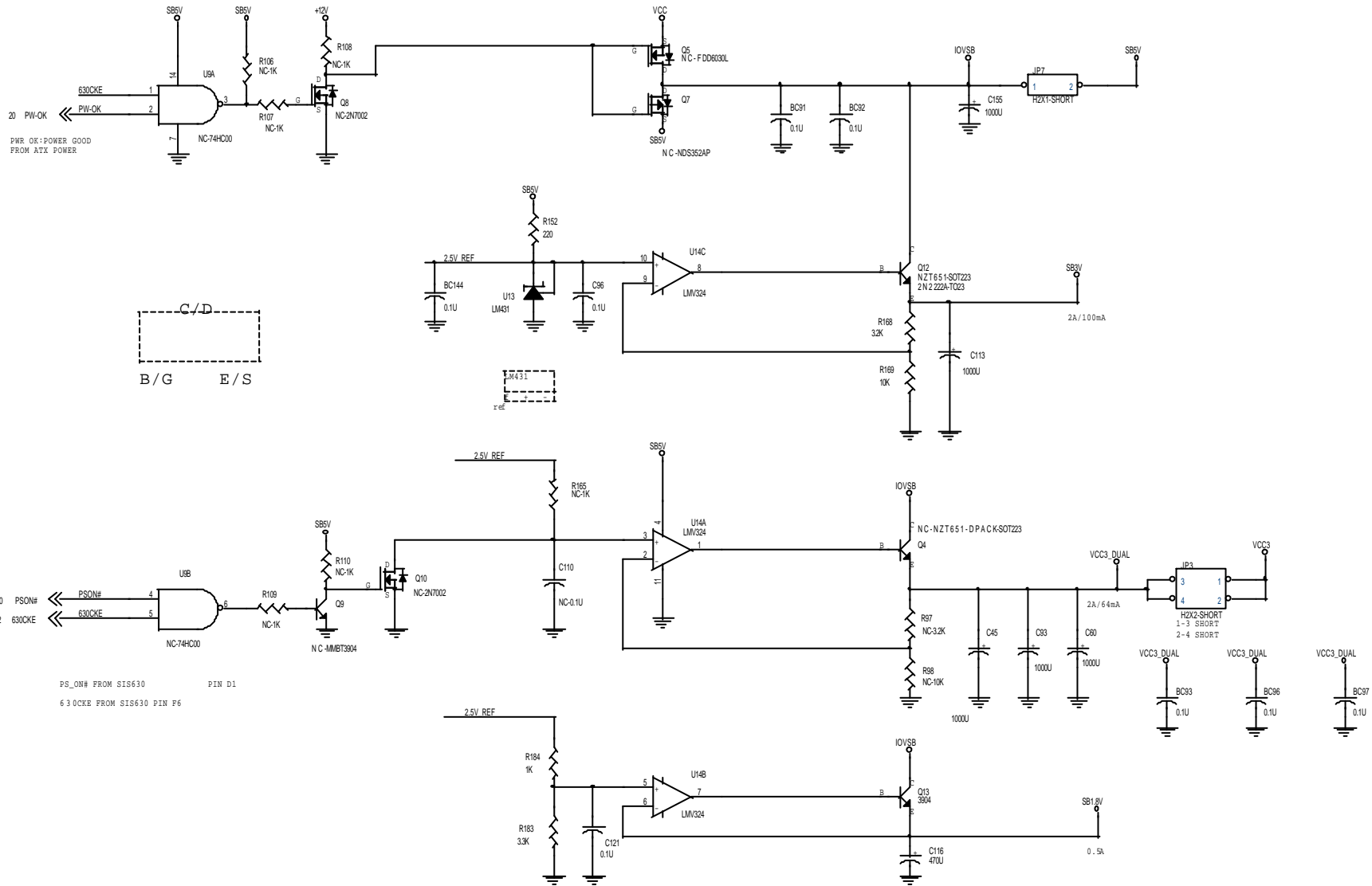
| JET WAY INFORMATION | |
|---------------------|----------------------------------|
| File: | NETWORK_OPTION1 |
| Size: | Document Number J-630CFREV.30 |
| Date: | Saturday, August11, 2001 |
| Sheet: | 18 of 26 |
| Rev: | 3.0 |



| | |
|----------|---------|
| RT9231 | HIP6021 |
| C11 x | 10p |
| C12 x | 102p |
| R15 x | 20k |
| R17 0 | 2.2k |
| C16 105P | 224p |
| R57 316 | 330 |
| R112 270 | 0 |
| R111 1k | NC |
| R172 470 | 0 |
| R160 1k | NC |

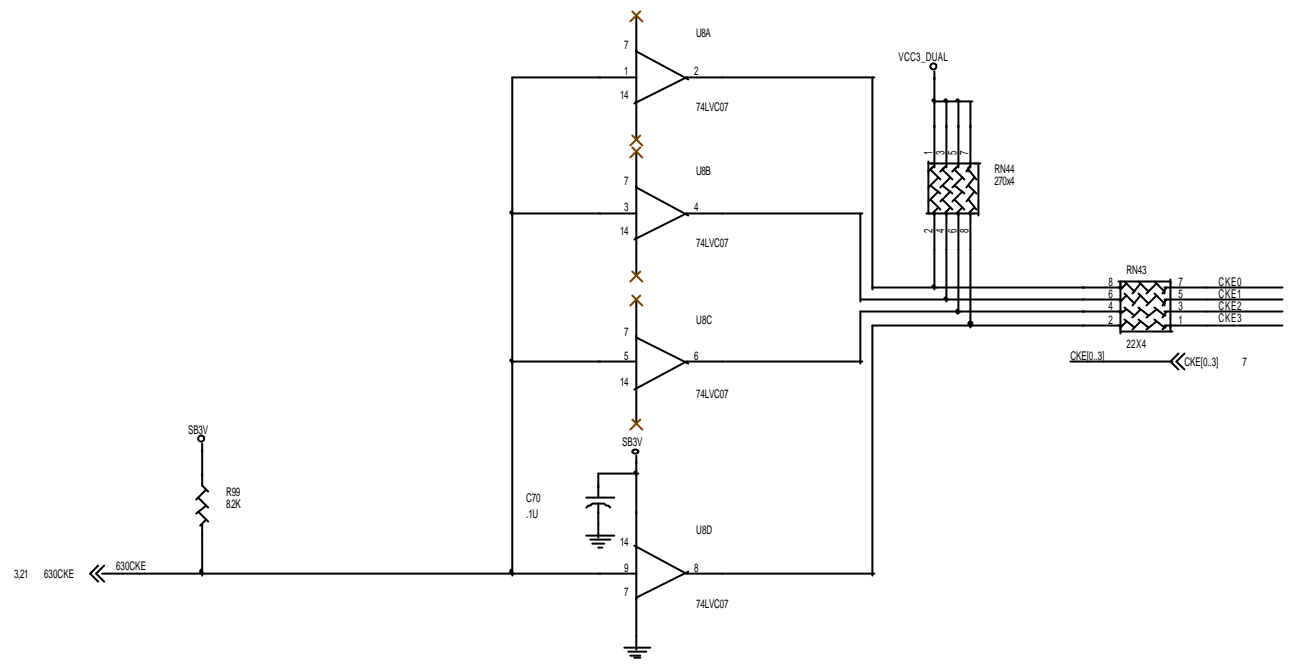
| JET WAY INFORMATION | | | |
|---------------------|---------------------------|-------|----------|
| File | HIP6021 | | |
| Size | Document Number | Rev | |
| B | J-630CF REV.30 | 3.0 | |
| Date | Saturday, August 11, 2001 | Sheet | 20 of 26 |

RC5058+Discrete ACPI FOR SIS630 - PAGE 2



| JET WAY INFORMATION | |
|---------------------|----------------------------|
| File | DISCRETE ACPI FOR SIS630-2 |
| Size | Document Number |
| B | J-6301CF REV.30 |
| Rev | 3.0 |
| Date | Saturday, August 11, 2001 |
| Sheet | 21 of 26 |

VCC and VCC3 Standby VOLTAGE SWITCH
 WHEN IN S0,S1
 THIS CIRCUIT PASSES THE NORMAL POWER
 WHEN IN S3,S4,S5
 THIS CIRCUIT PASSES THE STANDBY POWER



| | | | |
|---------------------------------|---------------------------|-------|----------|
| JET WAY INFORMATION | | | |
| Title | | | |
| VOLTAGE SWITCH FOR SUSPEND DRAM | | | |
| Size | Document Number | Rev | |
| B | J-630CF REV.30 | 3.0 | |
| Date | Saturday, August 11, 2001 | Sheet | 22 of 26 |

W83697HF

(To monitor battery voltage, this input should be connected directly to battery)

Temperature Sensing

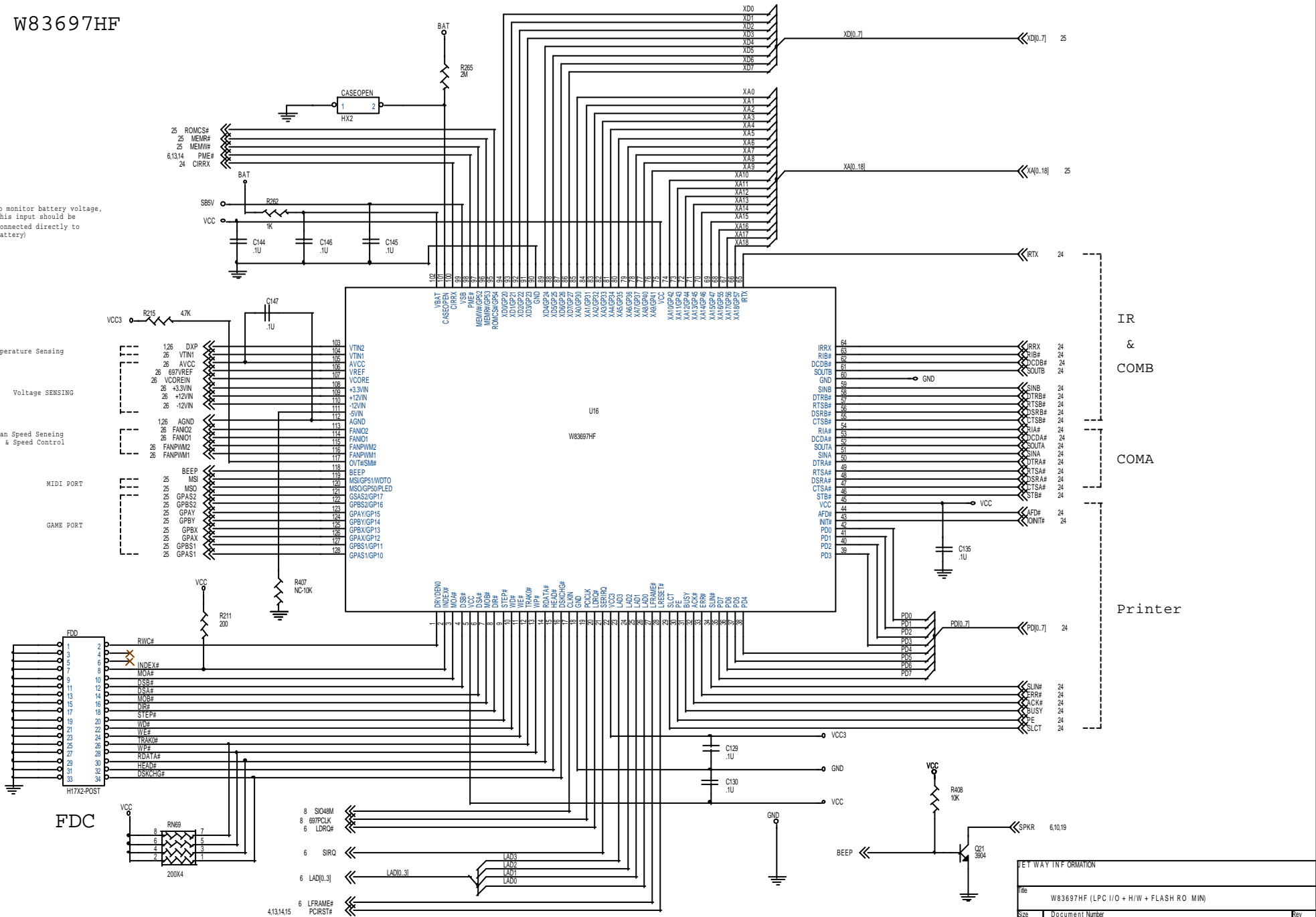
Voltage SENSING

Fan Speed Sensing & Speed Control

MIDI PORT

GAME PORT

FDC



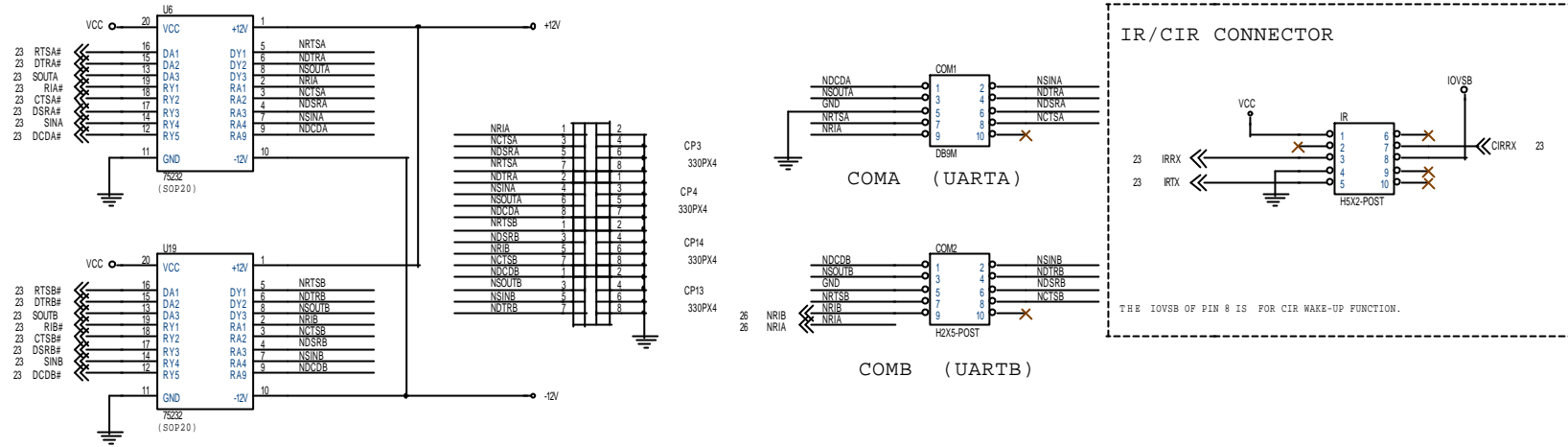
IR & COMB

COMA

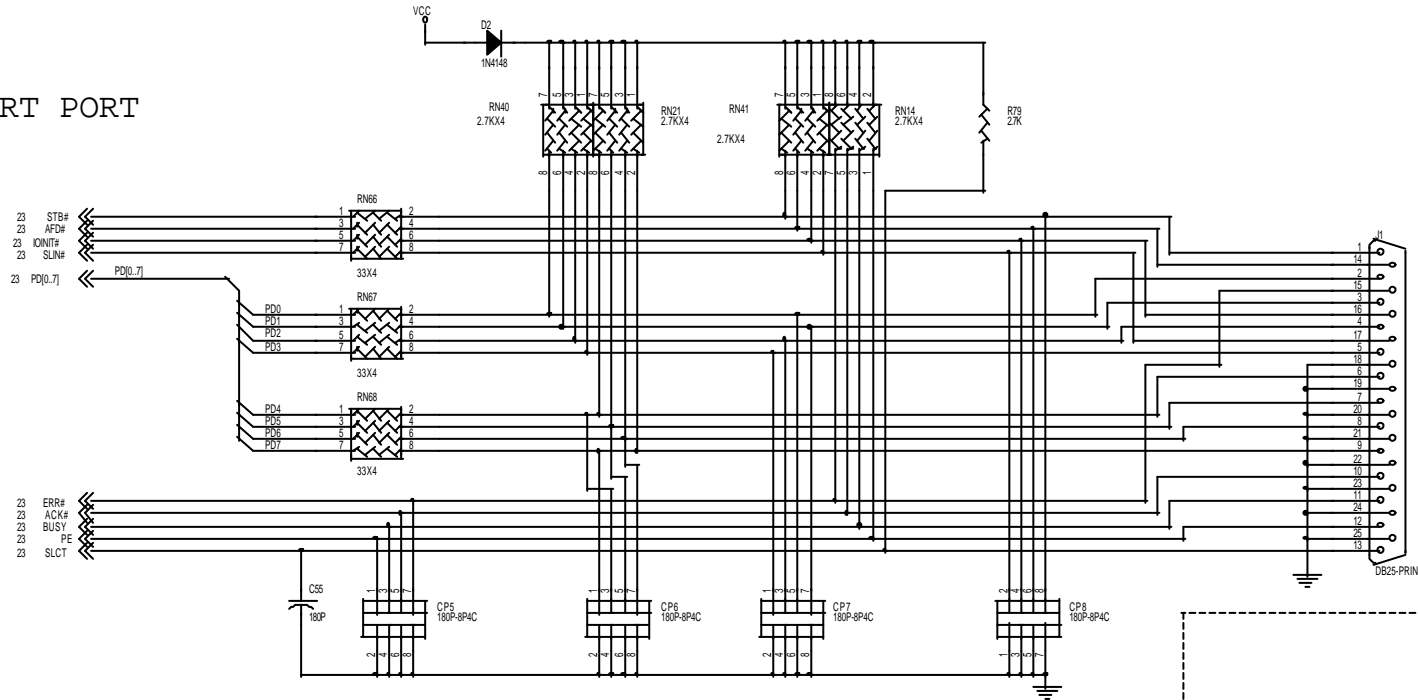
Printer

| JET WAY INFORMATION | |
|---------------------|--------------------------------------|
| File | W83697HF (LPC I/O + H/W + FLASH ROM) |
| Size | Document Number J-630CF REV.3.0 |
| Rev | 3.0 |
| Date | Saturday, August 11, 2001 |
| Sheet | 23 of 26 |

COM PORT

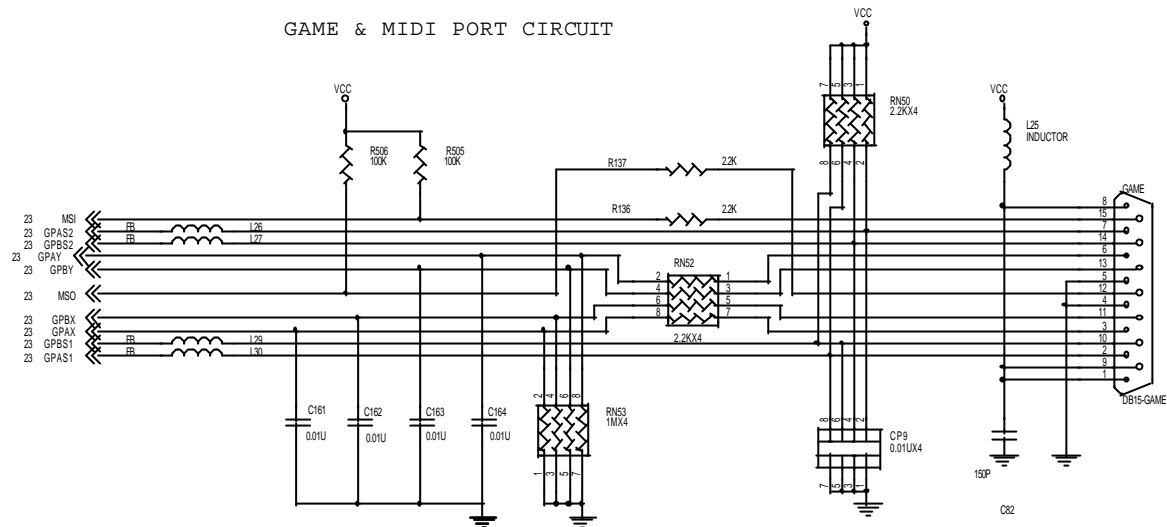


PRT PORT

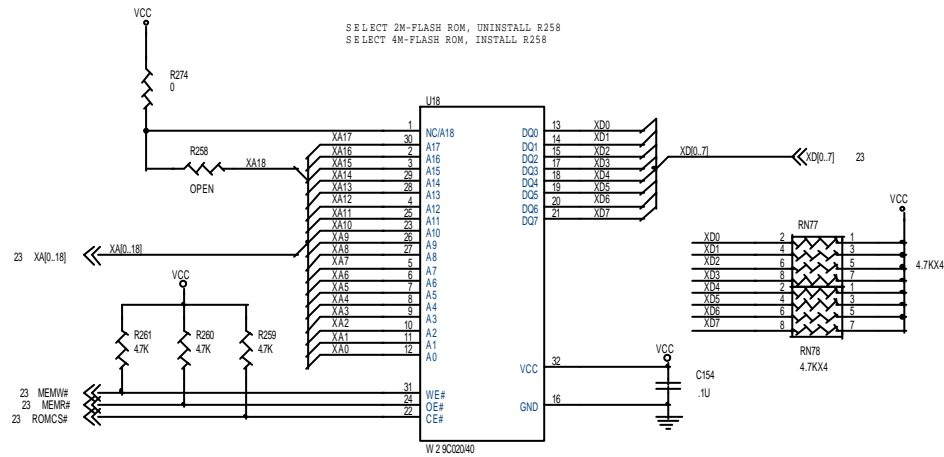


| KEYWAY INFORMATION | | |
|--------------------|---|----------------|
| File | W83697HF (LPC I/O + H/W + FLASH RO MIP) | |
| Size | Document Number | Rev |
| B | J-630CF REV.30 | 3.0 |
| Date | Saturday, August 11, 2001 | Sheet 24 of 26 |

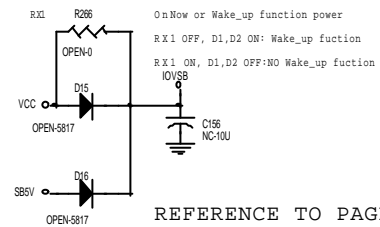
GAME & MIDI PORT CIRCUIT



FLASH ROM



IOVSB CIRCUIT



REFERENCE TO PAGE 21

NET WAY INFORMATION

W83697HF (LPC I/O + H/W + FLASH ROM)

Document Number J-630CF REV.30

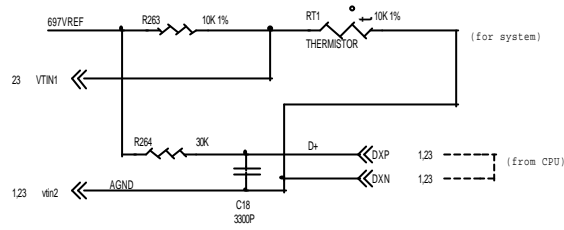
Size B Sheet 25 of 26

Date: Saturday, August 11, 2001

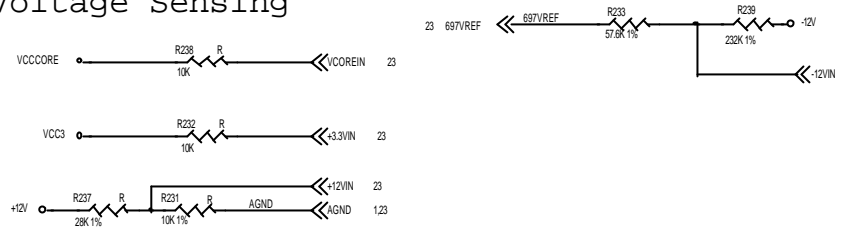
Rev 3.0

Hardware Monitor circuits

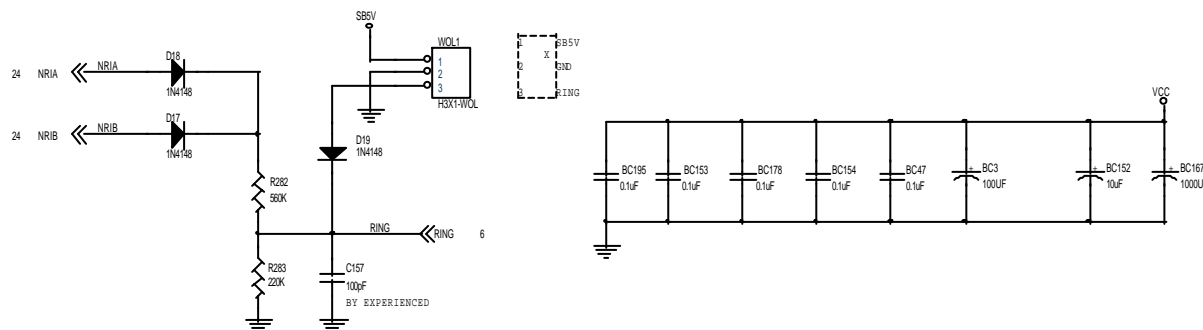
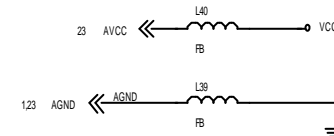
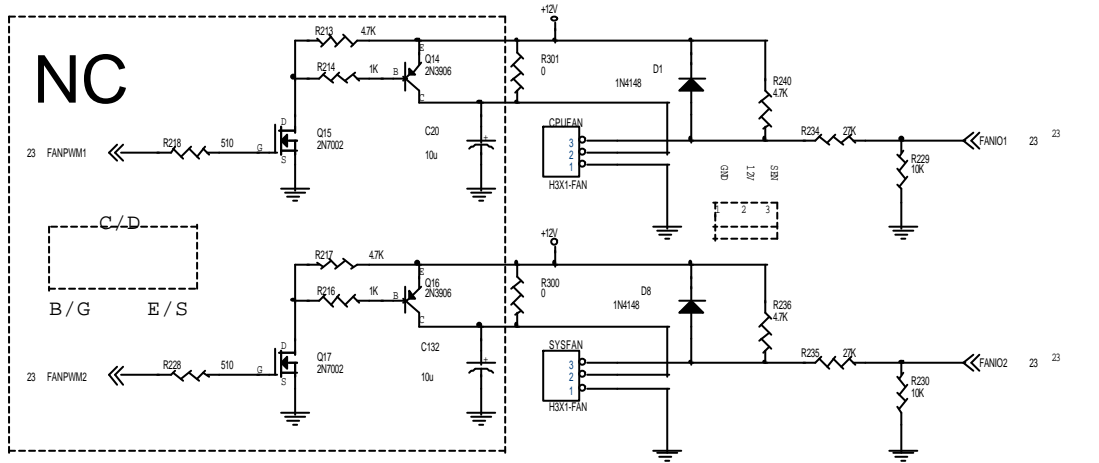
Temperature Sensing



Voltage Sensing



PWM Circuit for FAN speed control



| JET WAY INFORMATION | |
|---------------------|---|
| File | W83697HF (LPC I/O+ H/W + FLASH ROM I/F) |
| Size | Document Number J-630CF REV.30 |
| Rev | 3.0 |
| Date | Saturday, August 11, 2001 |
| Sheet | 26 of 26 |