

VIA Apollo ProMedia Board Schematics

601CF

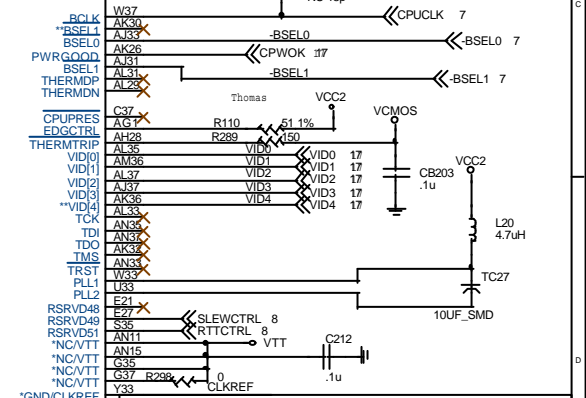
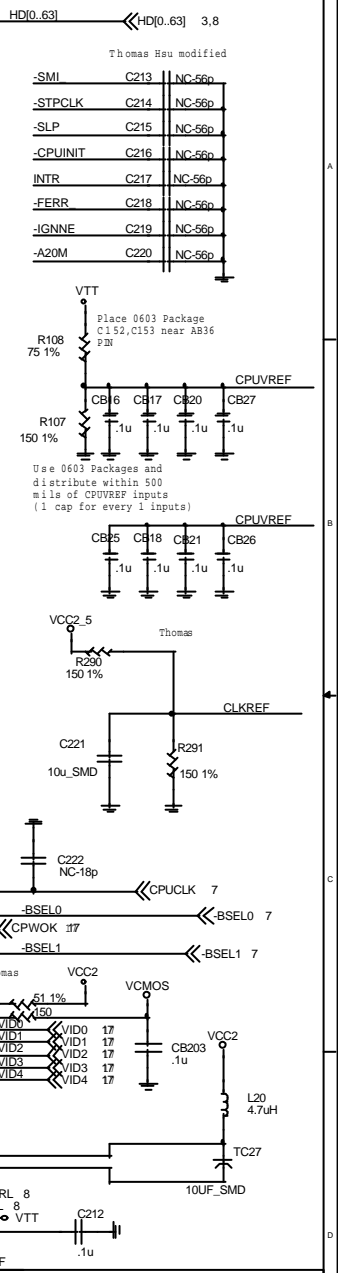
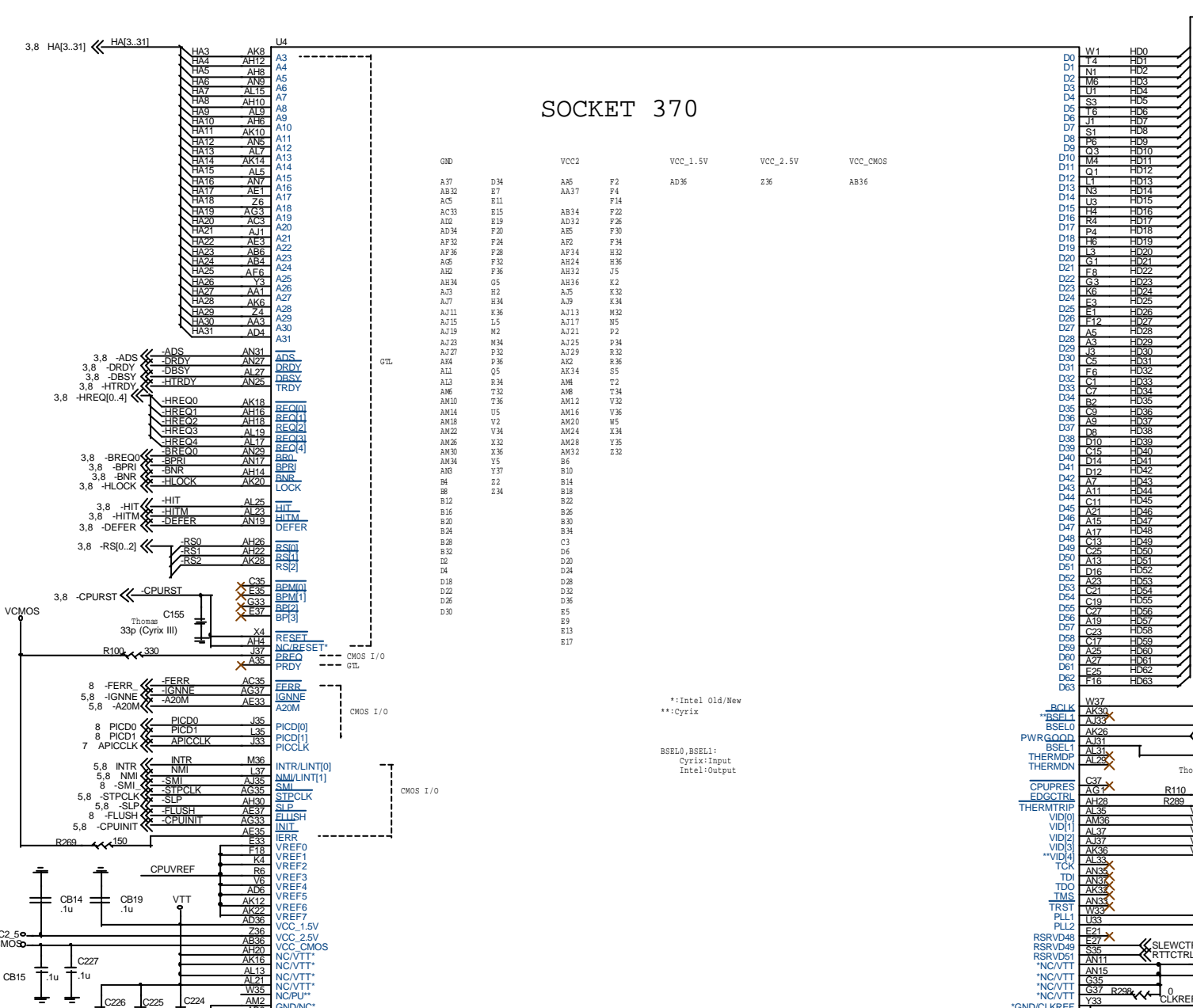
REV:2.0

TITLE	SHEET No.
COVER SHEET	1
SOCKET 370 PROCESSOR	2
NORTH BRIDGE VT8601/A	3,4
SOUTH BRIDGE VT82C686A/B	5,6
CLOCK SYNTHESIZER	7
AGTL+ BUS AND PULL UP RESISTORS	8
SDRAM DIMM SLOTS 1/2	9
PCI SLOT1 & PCI SLOT2	10
PCI SLOT3 & USB 2/3	11
ISA SLOT & SYSTEM ROM & AMR SLOT	12
IDE CONNECTORS & WAKE UP CIRCUITRY	13
FRONT PANEL & BACK PANEL CONNECTOR (USB 0/1)	14
FAN CONTROL CIRCUITRY & VGA CONNECTOR	15
AC'97 AUDIO CODEC & AUDIO PORTS	16
DC-DC CONVERTERS	17
ATX POWER CONNECTORS & BYPASS CAPACITORS	18

VIA TECHNOLOGIES ASSUMES NO RESPONSIBILITY FOR ANY ERRORS
IN DRAWING THESE SCHEMATICS. THESE SCHEMATICS ARE SUBJECT
TO CHANGE AT ANY TIME WITHOUT NOTICE.
COPYRIGHT 2000 VIA TECHNOLOGIES INCORPORATED.

JETWAY INFORMATION			
Title	COVER SHEET		
Size	Document Number	Rev	
Custom	J601CF REV:2.0	0.1	
Date:	Monday, March 25, 2002	Sheet	1 of 18

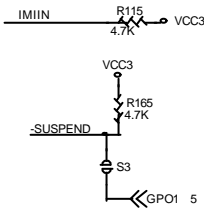
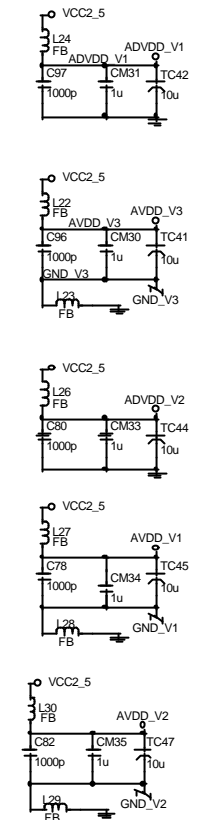
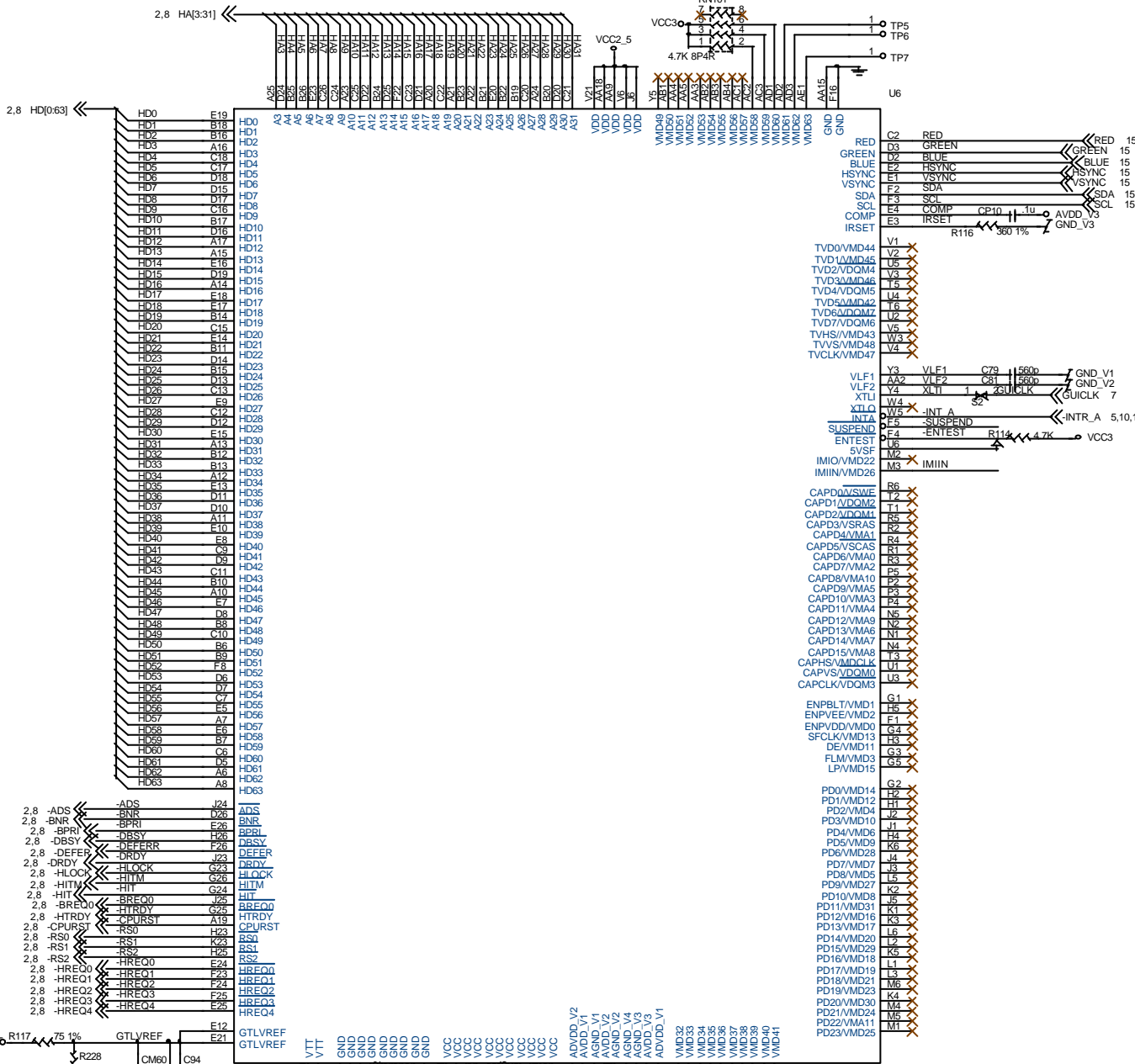
SOCKET 370



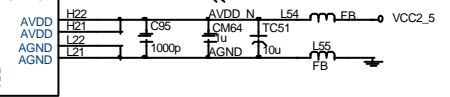
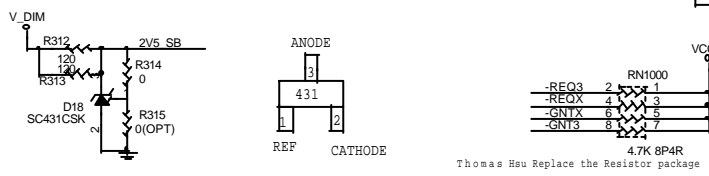
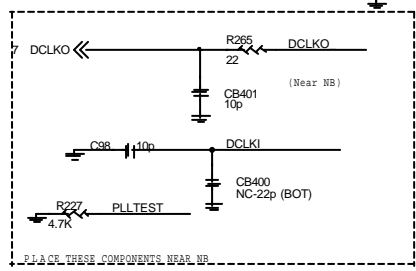
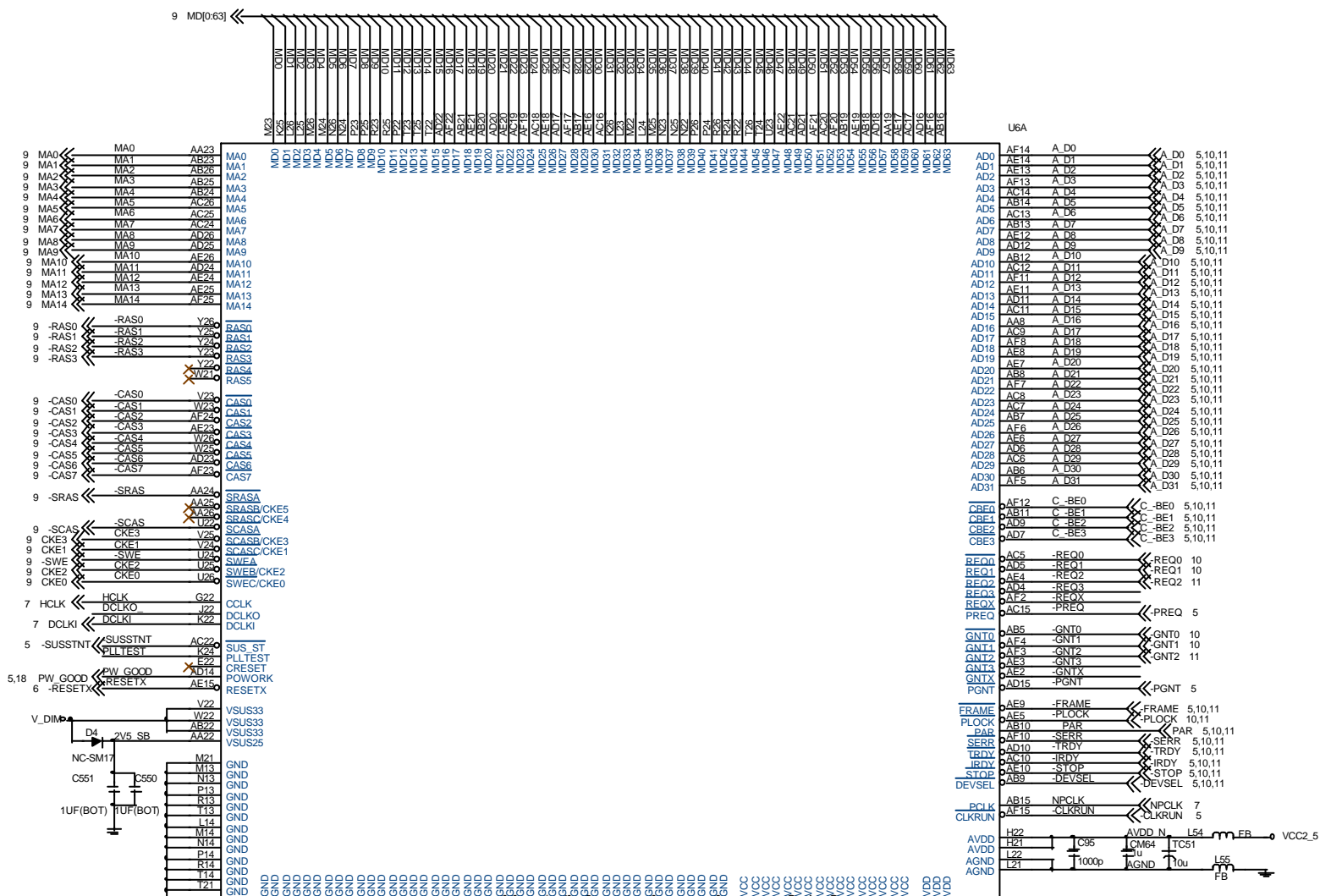
JETWAY INFORMATION		
Title: SOCKET 370 PROCESSOR		
Size: C	Document Number: J601CF REV:2.0	Rev: 0.1
Date: Monday, March 25, 2002	Sheet: 2 of 18	

Thomas modified

Thomas Hau



JETWAY INFORMATION			
Title NORTH BRIDGE VT8601 (PART1)			
Size C	Document Number	J601CF REV:2.0	Rev 0.1
Date: Monday, March 25, 2002	Sheet 3 of 18		



JETWAY INFORMATION		
Title: NORTH BRIDGE VT8601 (PART 2)		
Size: C	Document Number: J601CF REV:2.0	Rev: 0.1
Date: Monday, March 25, 2002	Sheet: 4	of 18

Thomas Hsu Replace the Resistor package

U17A	
PD 0	P16
PD 1	P18
PD 2	P20
PD 3	P17
PD 4	R19
PD 5	T16
PD 6	T18
PD 7	T20
PD 8	T19
PD 9	T17
PD 10	R20
PD 11	R18
PD 12	R16
PD 13	P19
PD 14	P17
PD 15	N20
PD A0	M17
PD A1	M19
PD A2	M18
PCS 1	L20
PCS 3	M16
-PACK	M20
-PREQ	N19
-PIOR	N17
-PIOW	N18
-PRY	N16

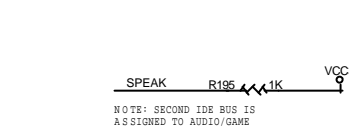
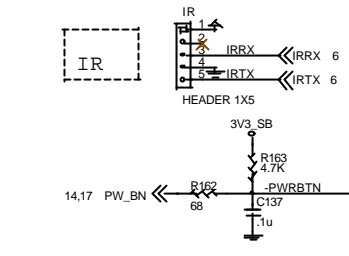
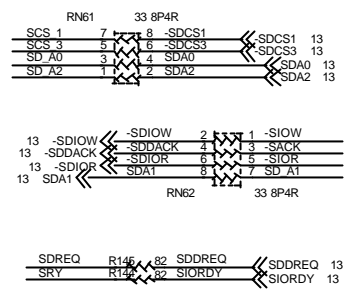
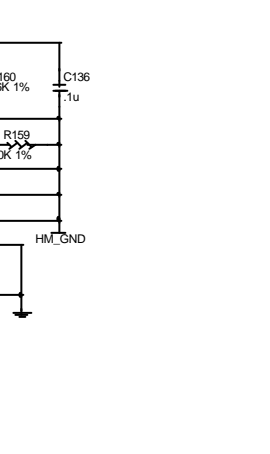
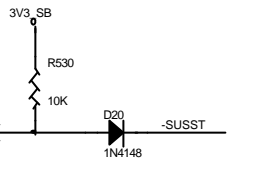
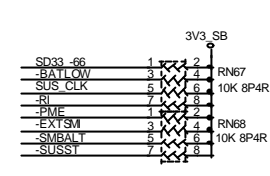
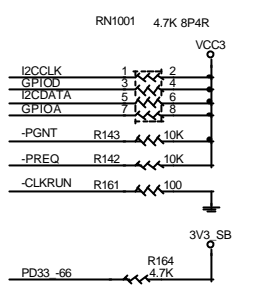
SDD0/BITCLK	W18	BITCLK	12,16
SDD1/SDIN	V17	SDIN	12,16
SDD2/SDIN2	Y17	SDIN2	12
SDD3/SYNC	Y16	R151	22 SYNC
SDD4/SDOUT	U15	R146	22 SDOUT
SDD5/ACRST	W15	J22	ACRST 12,16
SDD6/JBY	U14	JBYC	16
SDD7/JBX	U14	JBYC	16
SDD8/JAY	V15	JACX	16
SDD9/JAX	T15	JAB2	16
SDD10/JAB2	W16	JAB1	16
SDD11/JAB2	U16	JBB2	16
SDD12/JBB2	Y17	JBB1	16
SDD13/JBB1	Y18	JBB1	16
SDD14/MSO	Y19	MSI	16
SDD15/MSO	Y19	MSI	16

U19	SD A0
V18	SD A1
U20	SD A2
SDA2	SDA2
SDCS1	SDCS1
SDCS3	SDCS3
SDACK	SDACK
SDPREQ	SDPREQ
SDIOR	SDIOR
SDIOW	SDIOW
SDRDY	SDRDY

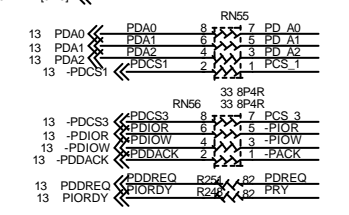
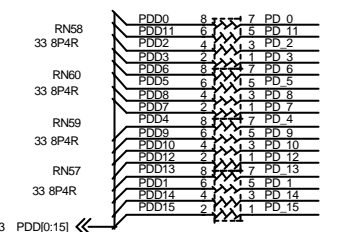
Y7	-A20M	-A20M	2,8
W7	-FERR	-FERR	8
H6	IGNNE	IGNNE	2,8
W8	INTR	INTR	2,8
U7	NMI	NMI	2,8
D7	SLP	SLP	2,8
W7	-STPCLK	-STPCLK	2,8
U9	I2CCLK	I2CCLK	7
T9	I2CDATA	I2CDATA	7
W6	PW GOOD	PW GOOD	4,18
W12	CLKRUN	CLKRUN	4
V5	SPEAK	SPEAK	12,16
W11	PD33_66	PD33_66	13
U8	GPIOD	GPIOD	
Y12	GPO4	GPO4	VCC3
W12	GPO6	GPO6	VCC3
W10	-SUSST	-SUSST	
T10	SUS CLK	SUS CLK	
Y10	-EXTSM	-EXTSM	14
W11	RI	RI	13
W11	-PME	-PME	10,11
W11	-BATLOW	-BATLOW	
W6	-RSMRST	-RSMRST	17
U10	SD33_66	SD33_66	13
W10	-SMBALT	-SMBALT	
V9	GPO1	GPO1	3
W9	-SUBS	-SUBS	17,18
V9	-SUSC	-SUSC	17,18

F15	GND
G15	GND
L15	GND
R15	GND
Y14	GND
W14	IN2
U13	IN2B
V13	IN2B
W13	TSEN1
T13	VREF
Y13	VREF2
T12	FAN1
U12	FAN2
R12	VCC3
R13	VCC3

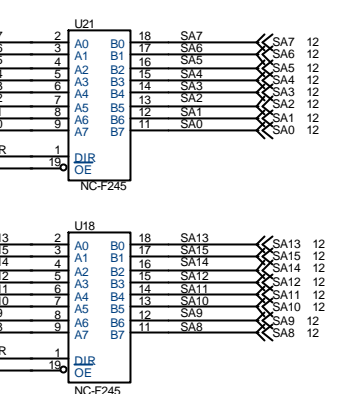
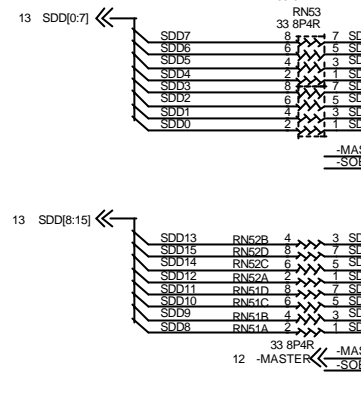
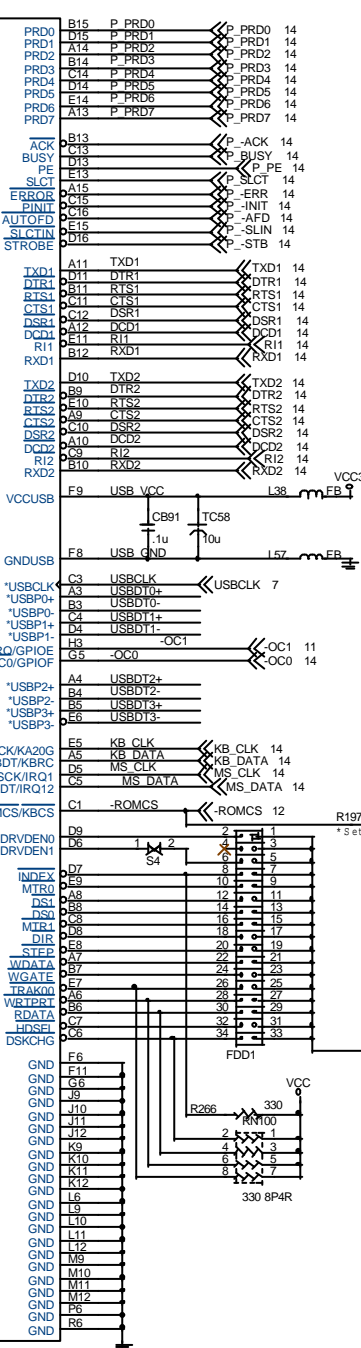
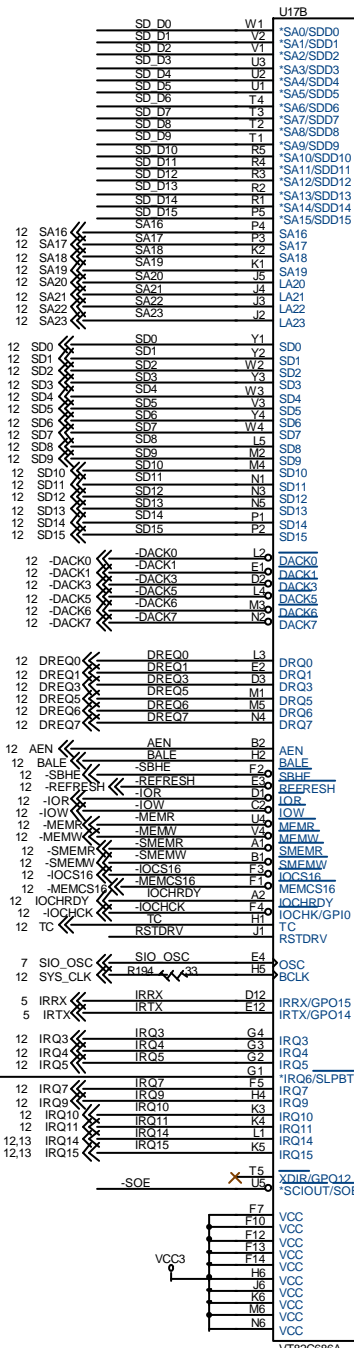
I2CCLK & I2CDATA PULL UP RESISTOR SHOULD PLACE TRACE END



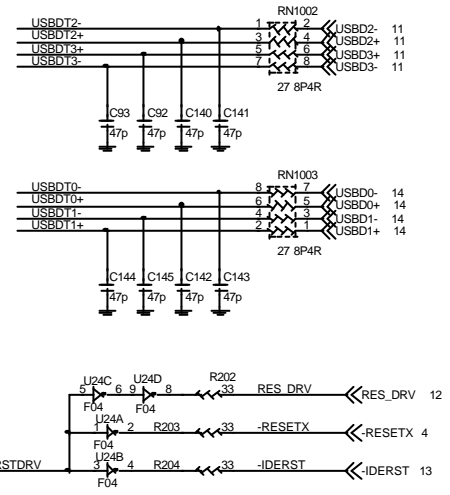
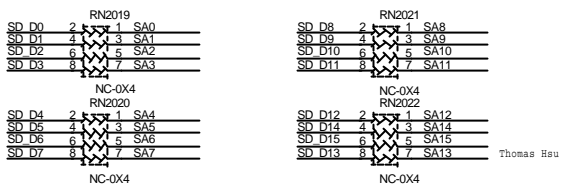
NOTE: SECOND I2B BUS IS ASSIGNED TO AUDIO/GAME



JETWAY INFORMATION			
Title	SOUTH BRIDGE VT82C68A (PART 1)		
Size	Document Number	J601CF REV:2.0	Rev 0.1
Date:	Monday, March 25, 2002	Sheet 5 of 18	

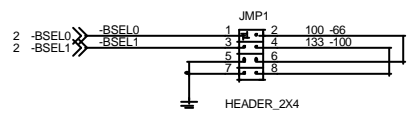
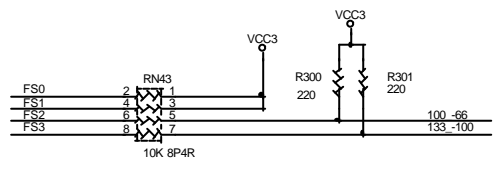
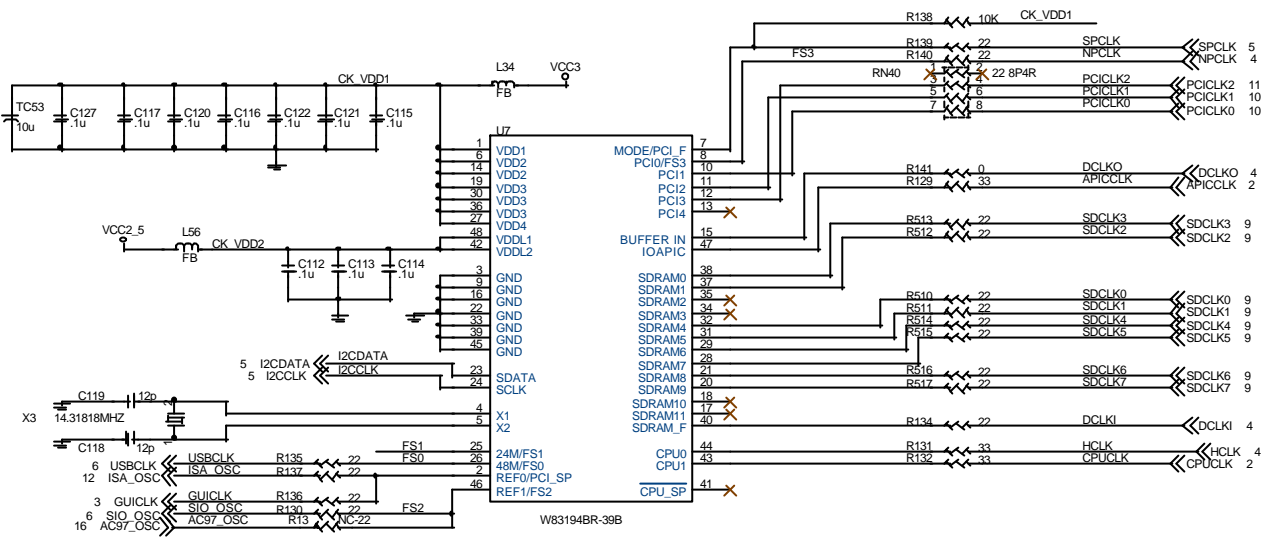


Thomas Hsu

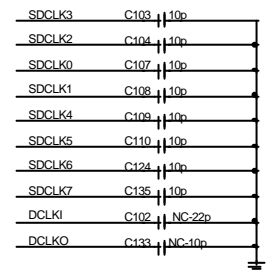
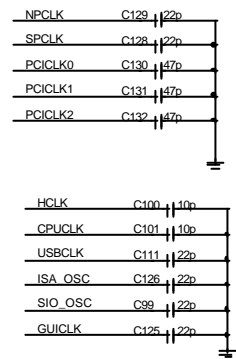


JETWAY INFORMATION

Title SOUTH BRIDGE VT82C686A (PART 2)		
Size C	Document Number J601CF REV:2.0	Rev 0.1
Date: Monday, March 25, 2002	Sheet 6 of 18	

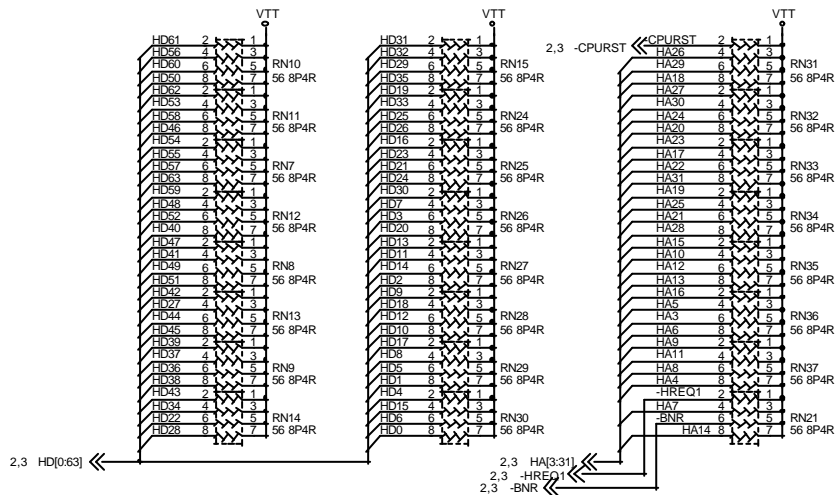
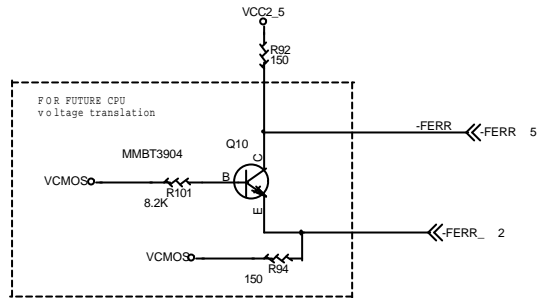


7-8	5-6	3-4	1-2	CPU
OFF	OFF	ON	ON	AUTO
ON	ON	OFF	OFF	66
ON	OFF	OFF	OFF	100
OFF	OFF	OFF	OFF	133

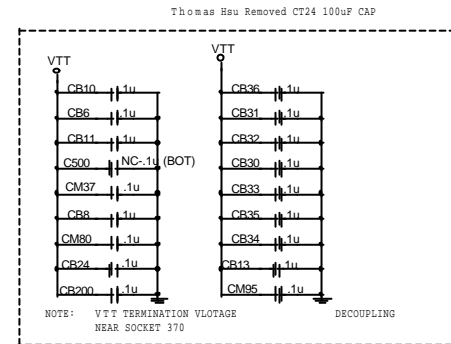
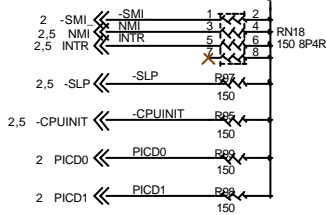
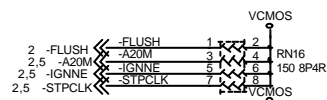
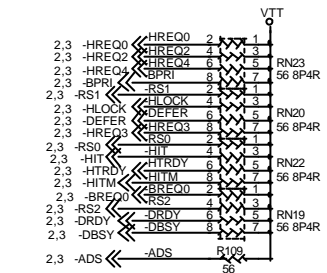
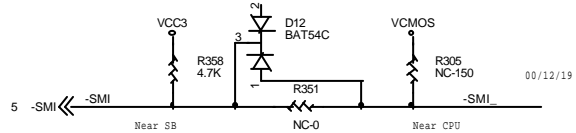


JETWAY INFORMATION

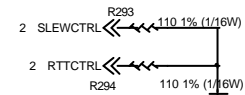
Title CLOCK SYNTHESIZER		
Size C	Document Number J601CF REV:2.0	Rev 0.1
Date Monday, March 25, 2002	Sheet 7	of 18



Thomas modified for detecting Ratio by CPU

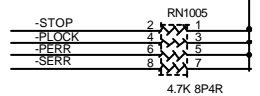
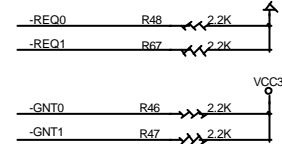
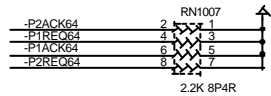
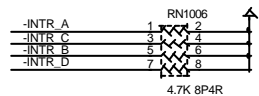
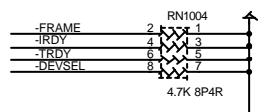
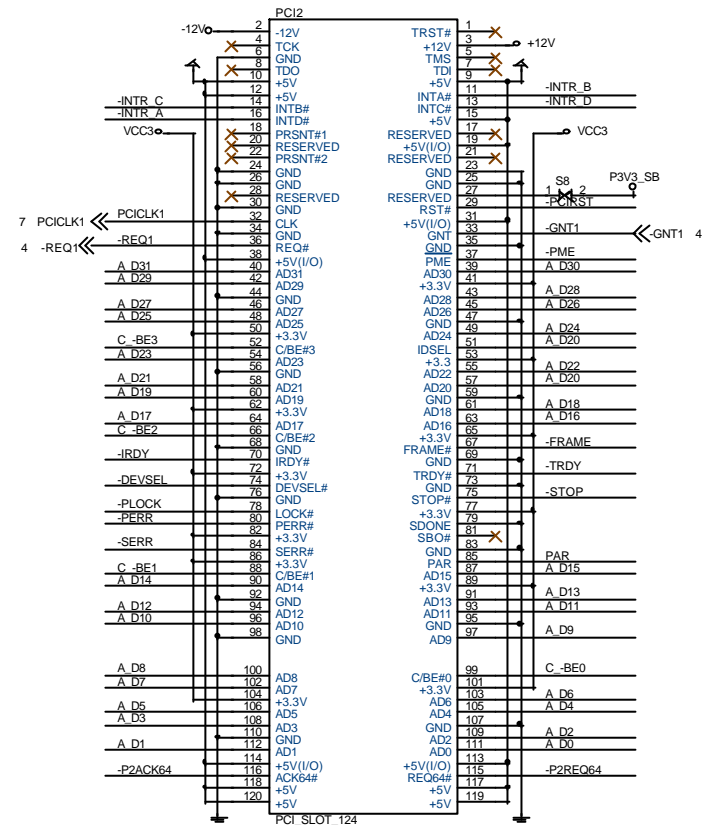
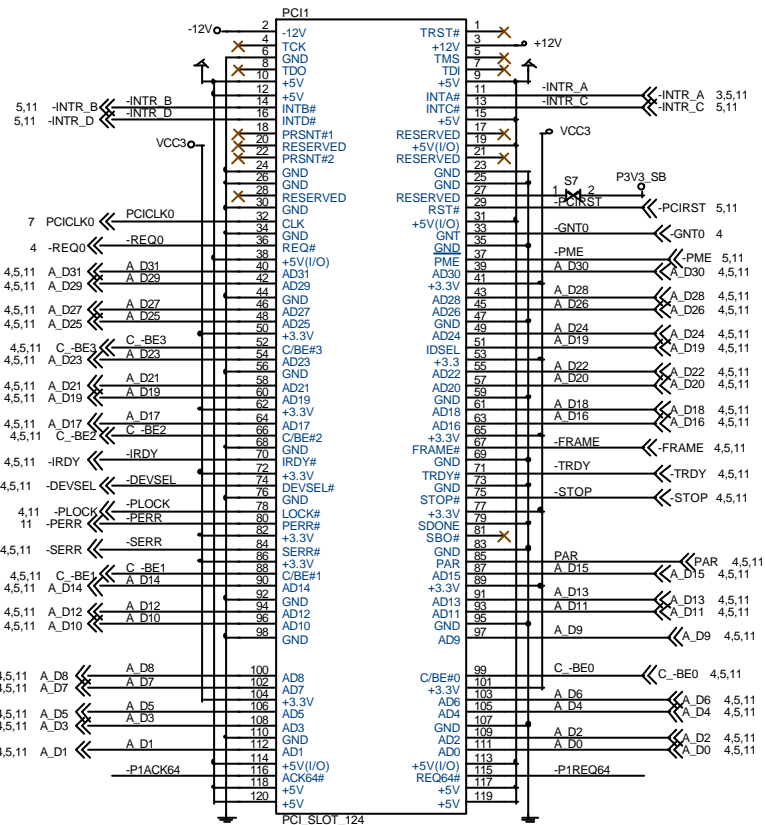


Thomas Removed for detecting ratio by CPU



JETWAY INFORMATION

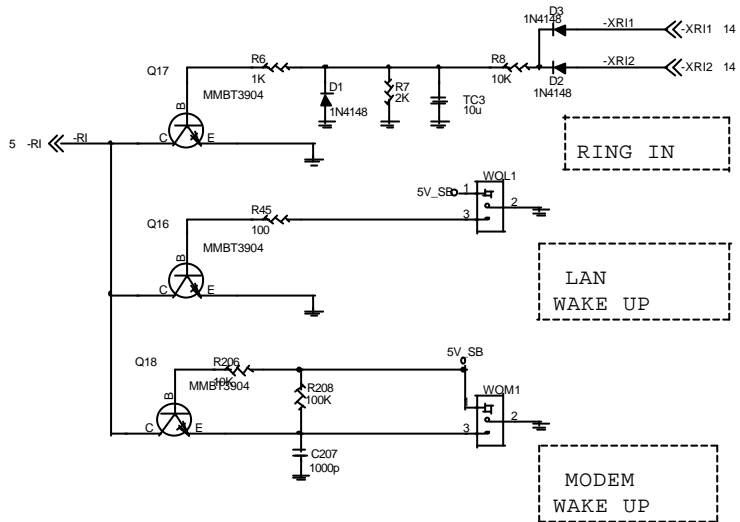
Title AGTL+ PULL UP RESISTORS		
Size C	Document Number J601CF REV:2.0	Rev 0.1
Date Monday, March 25, 2002	Sheet 8 of 18	



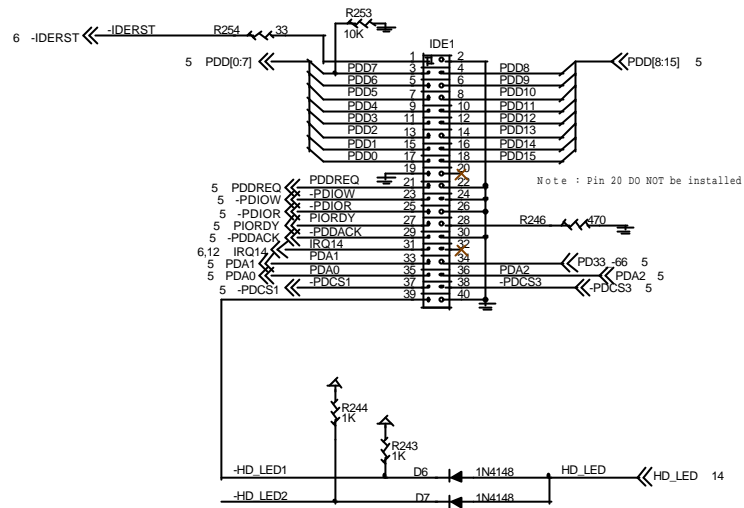
Thomas Hsu

Thomas Hsu

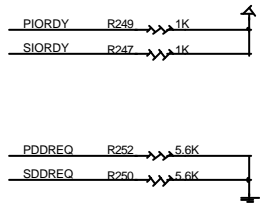
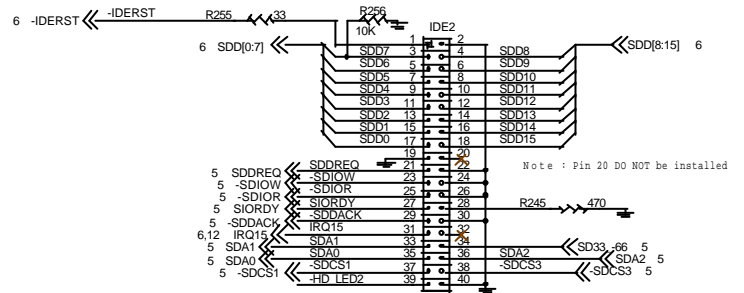
JETWAY INFORMATION		
Title PCI1 & PCI2 SLOTS		
Size C	Document Number J601CF REV:2.0	Rev 0.1
Date: Monday, March 25, 2002	Sheet 10 of 18	



PRIMARY

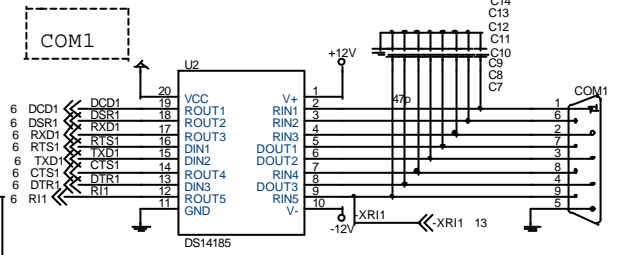
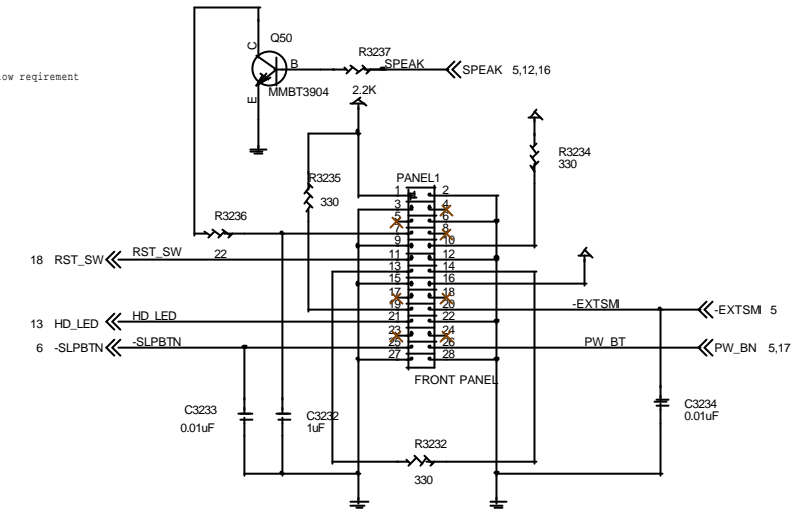
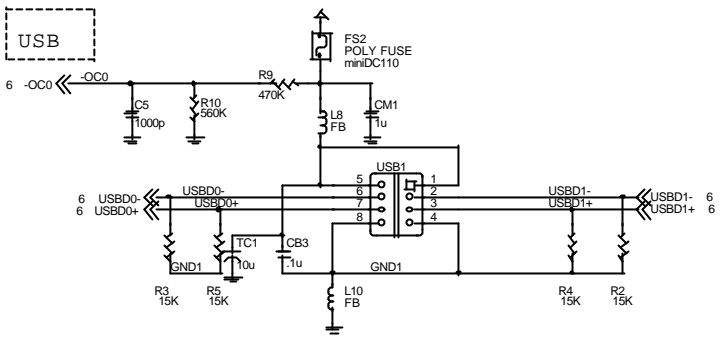
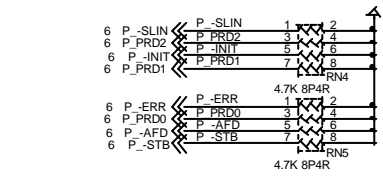
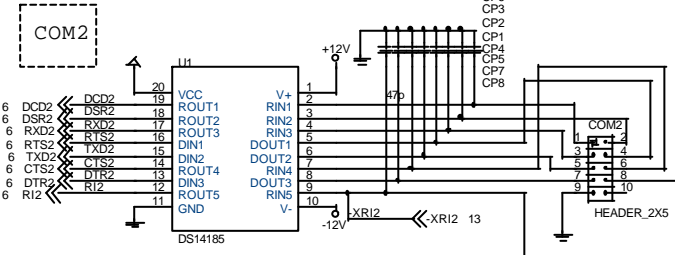
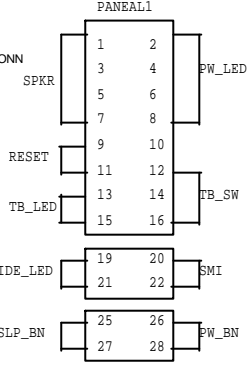
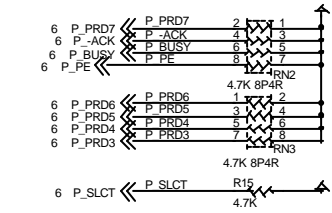
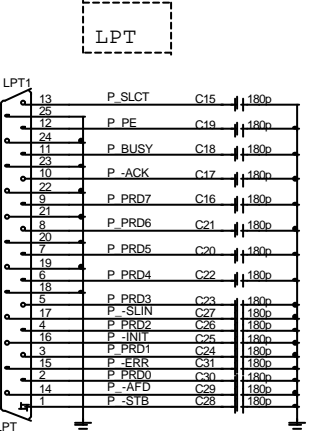
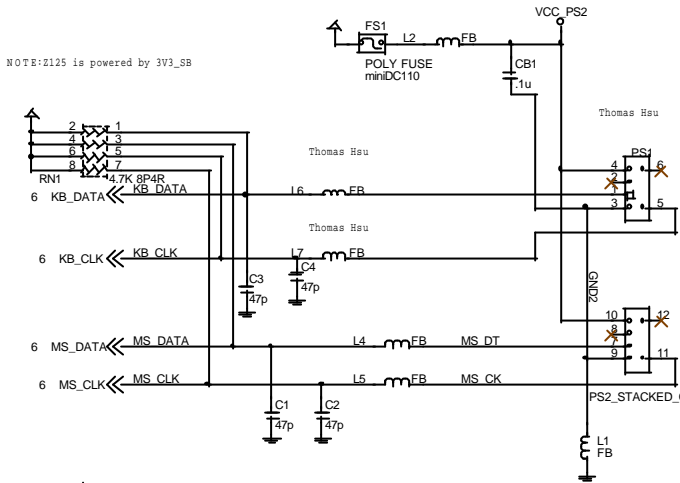


SECONDARY

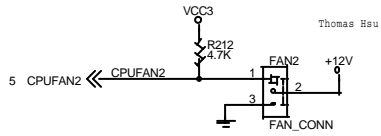
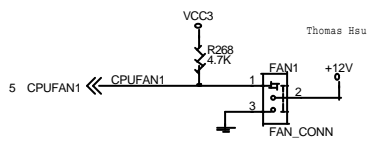
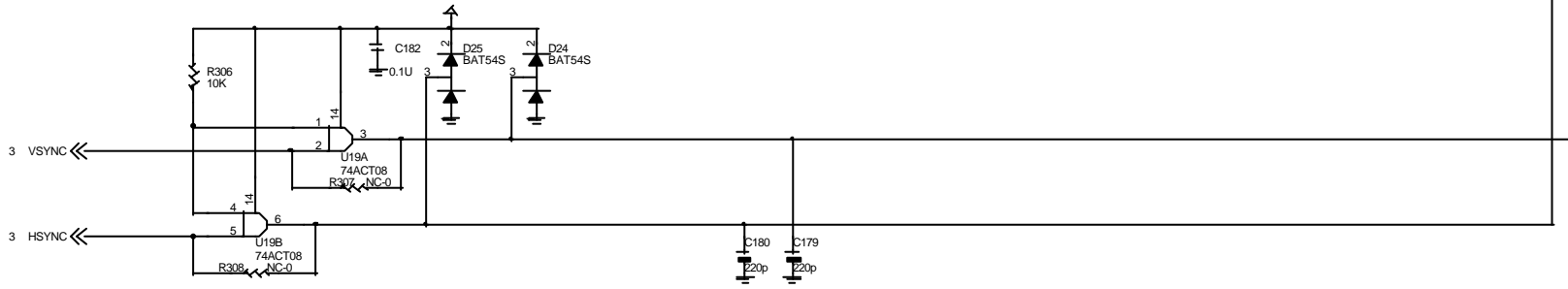
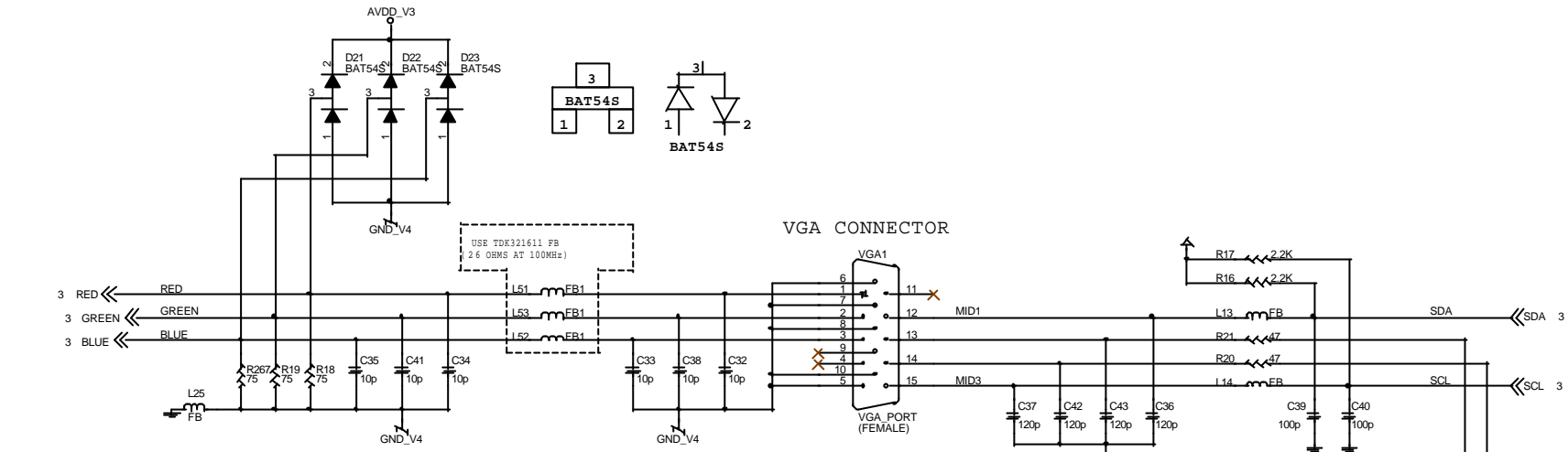


JETWAY INFORMATION		
Title: IDE1 & IDE2		
Size: C	Document Number: J601CF REV:2.0	Rev: 0.1
Date: Monday, March 25, 2002	Sheet: 13	of 18

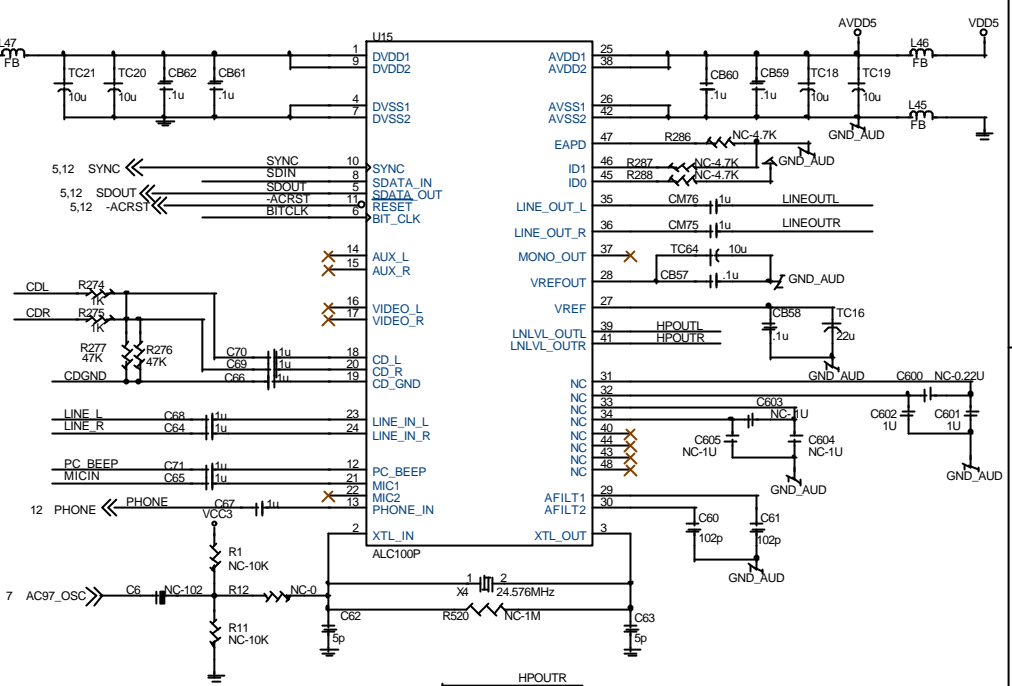
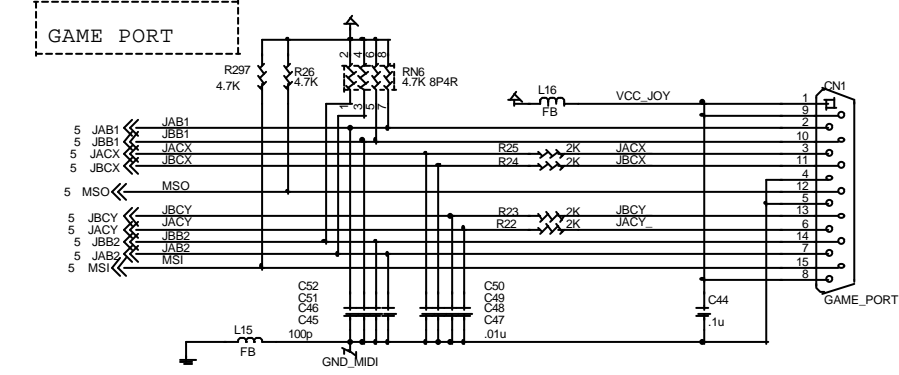
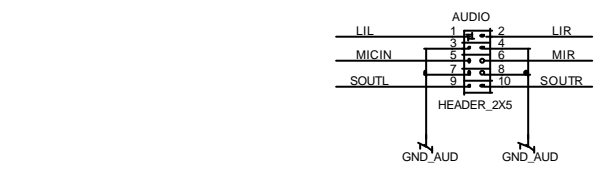
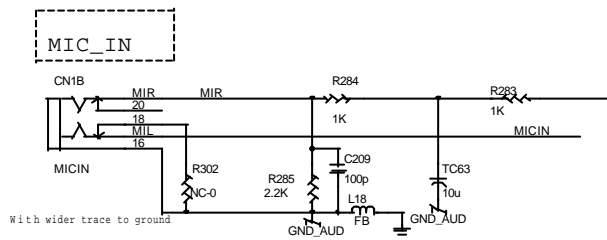
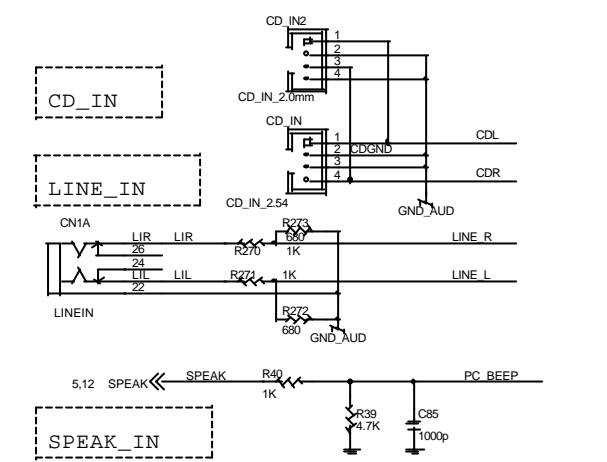
NOTE: 2125 is powered by 3V3_SB



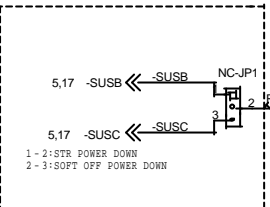
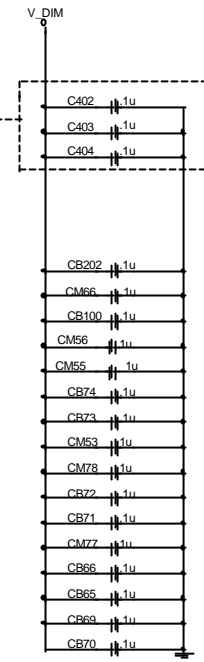
JETWAY INFORMATION		
Title FRONT PANEL & BACK PANEL		
Size C	Document Number J601CF REV:2.0	Rev 0.1
Date: Monday, March 25, 2002	Sheet 14 of 18	



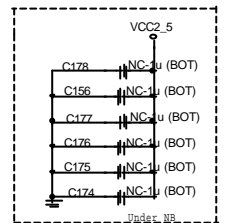
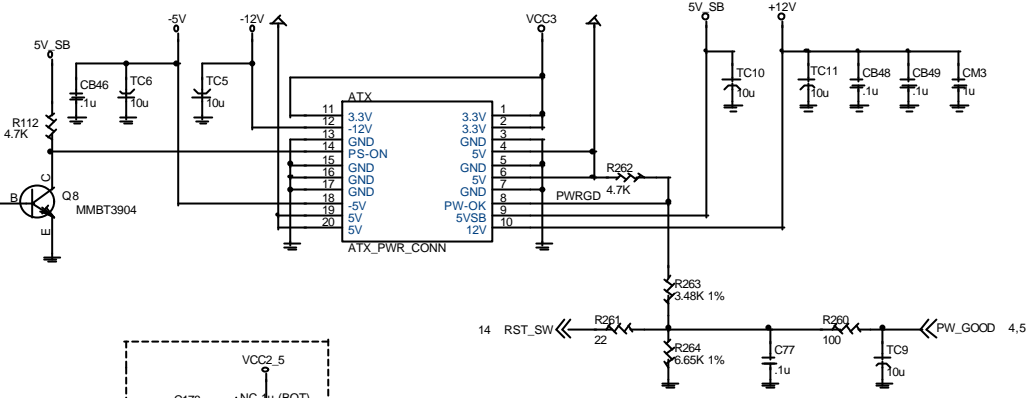
JETWAY INFORMATION		
Title FAN CONTROL & VGA CONNECTOR		
Size C	Document Number J601CF REV:2.0	Rev 0.1
Date: Monday, March 25, 2002	Sheet 15	of 18



decoupling capacitors for DRAM signals with vias
Place these capacitors near vias

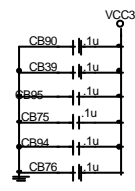


FOR STR FUNCTION

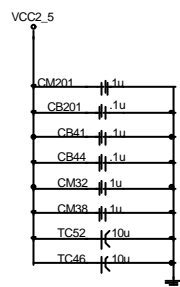
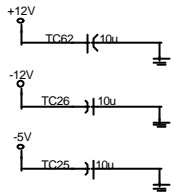
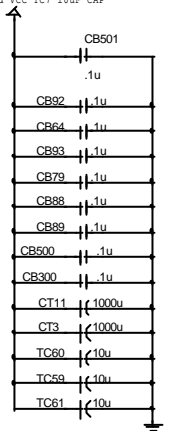
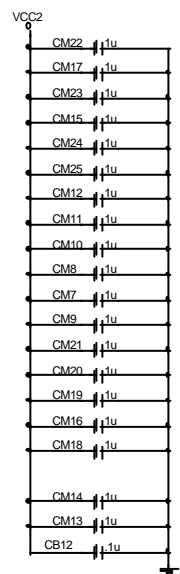
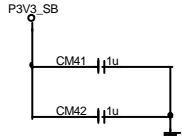
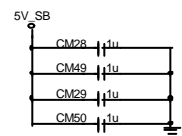
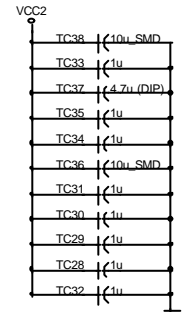
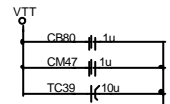
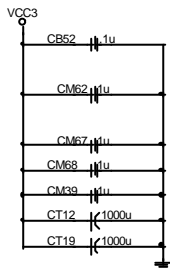
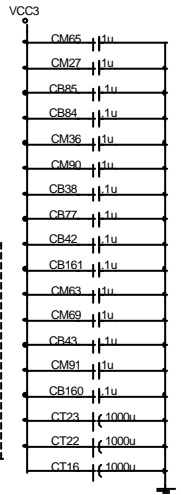
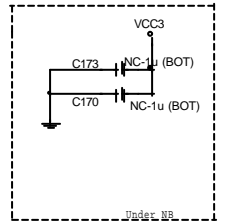


Layout remove 2 VCC3 CAPs

Thomas Hsu Removed VCC TC7 10uF CAP



Layout remove vcc3 CAPs



JETWAY INFORMATION		
Title ATX POWER/BYPASS CAPACITORS		
Size C	Document Number J601CF REV:2.0	Rev 0.1
Date: Monday, March 25, 2002	Sheet 18	of 18